

Bury Council & Bury CCG

Joint Commissioning Statement:

Education, health and care provision for children and young people with Special Educational Needs and Disability (SEND)
2018/2019.

A statement of joint commissioning arrangements between Bury Council and Bury NHS Clinical Commissioning Group in accordance with Part 3 of the Children and Families Act (2014)

Content

Glossary of terms	3
Introduction and context	4
Governance	5 - 6
Data sources	7
Education, health and social care services provided in Bury	8 - 9
Advice and information	10 - 11
Assessments	12
Decision making panels	13
Funding agreements	14
Provision for 0-25 year olds	15
Education Health and Social Care (EHC) plans; My Adult Care Assessment (MACA) & Health Care Plans	16
Personal budgets & Carers Assessment	17
Complaints and disputes	18
Closing statement	19
Appendix 1: Relevant Legislation & guidance	20 - 21
Appendix 2: Local Accountability	22 – 25
Appendix 3: Local Panels in support of SEND	26 - 27

Glossary of Terms

CAMHS	Child & Adolescent Mental Health Service
CCG	Clinical Commissioning Group
EHCP	Education Health and Care Plan
LA	Local Authority
MASH	Multi Agency Safeguarding Hub
NHS	National Health Service
PVI	Private Voluntary Independent Provider
SENCO	Special Educational Needs Co-ordinator
SEND	Special Educational Needs and Disability

Introduction and context

Children and Families Act (2014): Special Educational Needs and Disability (SEND)

Part 3 of the Children and Families Act (2014) transforms the system for disabled children and young people and those with **SEN**, so that services consistently support the best outcomes for them. The reforms create a system from birth to 25 through the development of coordinated assessment and single Education, Health and Care (EHC) Plans; improving cooperation between all services responsible for providing education, health or social care; and giving parents and young people greater choice and control over their support.

The SEN/D reforms focus on the following themes:

- Working towards clearly defined outcomes
- Engagement and participation of parents and young people
- Joint Commissioning and developing a Local Offer of support
- Coordinated assessments and Education, Health and Care Plans
- Personalisation and personal budgets

Preparation for Adulthood is a key element of the reforms that cuts across all of these themes.

Section 26 - Joint Commissioning

Section 26² of the Act states that partner commissioning bodies must make joint commissioning arrangements for education, health and care provision for children and young people with SEND. The term 'partners' refers to the local authority and its partner commissioning bodies across education, health and social care provision for children and young people with SEND, including clinicians commissioning arrangements and NHS England for specialist health provision.

This document describes the joint commissioning arrangements that are in place in Bury to meet the requirements of this legislation.

¹ Taken from www.councilfordisabledchildren.org.uk

² See Appendix 1 for extract from Section 26 of the Children and Families Act (Part 3)

Governance³

Bury SEND Partnership Board

The development of strategies and policies to support the implementation of the requirements of Part 3 of the Children and Families Act (2014) is being overseen by the Bury SEND Partnership Board.

The Terms of Reference of the SEND Partnership Board are:

- To oversee the implementation of the SEND Reforms in Bury, and;
- To hold the whole of the SEND system to account.

Bury Strategic Leadership Team

Bury Strategic Leadership Team (SLT) comprises the senior decision makers in the Council and Bury Clinical Commissioning Group (CCG) Chief Officer. The Group has a level accountability to make decisions and commit resources. It provides the strategic direction for the Council and CCG and is the accountability body for decisions affecting strategies, policies and finance.

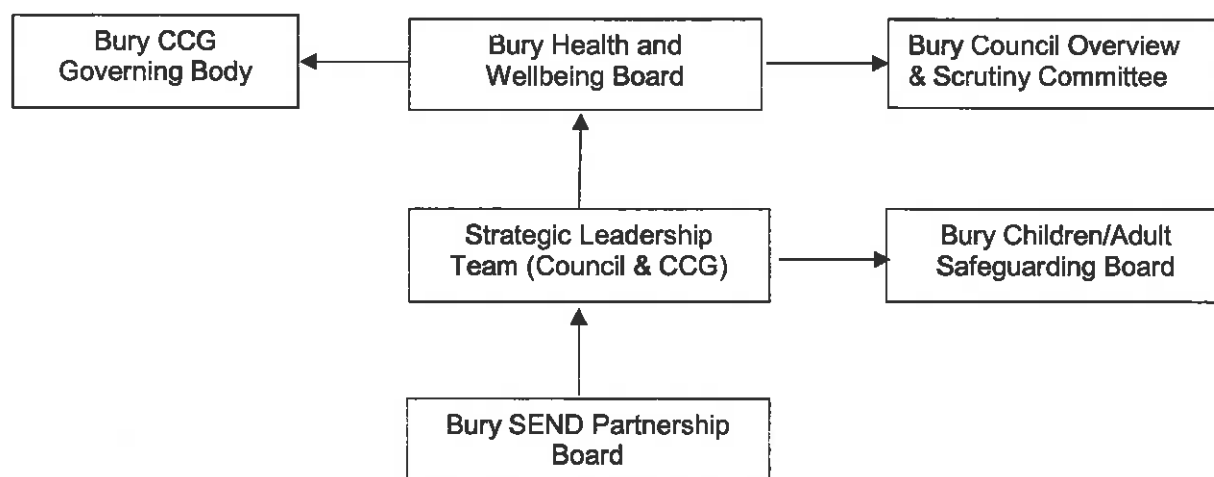
Bury Health and Wellbeing Board

Health and Wellbeing Boards are a key element of the Health and Social Care Act (2012) to deliver improved strategic co-ordination across the NHS, social care, children's services and public health. The Board must assess the needs and assets of the local population, producing a strategy that addresses those needs and builds on any assets, influences commissioning plans of organisations and promotes joint commissioning and integrated provision.

Bury Health and Wellbeing Board will have ultimate responsibility for sign off/ endorsement of policies and procedures in relation to the implementation of Part 3 of the Children and Families Act (2014).

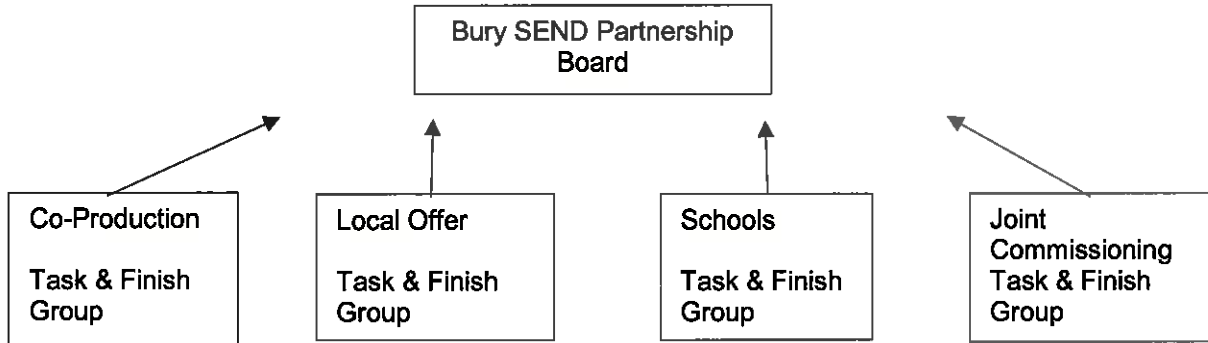
Governance Structure

The governance structure for SEND in Bury is as below:



³ See Appendix 2 for more detail on descriptors of accountability structures

SEND Work Streams



SEND Work Streams have been established which report in to the SEND Partnership Board and Task & Finish Groups are accountable for the work-plans in those areas.

Descriptors of the Governance bodies and structures are in Appendix 2 to show the synergy between the boards/bodies and the range of its accountability.

Data Sources

Bury's Joint Strategic Needs Assessment (JSNA) provides a strategic assessment of current and future needs of local communities and is used to help determine priorities and plan services.

From September 2018 the JSNA will include a section on SEND detailing the needs of the SEND cohort.

Additional data that is used to assist the planning of Local Authority and Health Services for children with SEND includes:

- Annual School Census data
- GP registration data
- Child Health data
- Early Years Census – PVI Providers
- Headcount data 3 & 4 year olds accessing additional Early Years (includes 2 year olds who have an EHCP)
- Monitoring information from commissioned services
- Feedback from service users and their families
- Information from EHC Plans for individual needs and trends

This data is used by senior managers of Bury Council and Bury Clinical Commissioning Group (CCG), to plan and provide resources for services, including directly commissioned services for children with SEND.

Education, health and social care services commissioned in Bury

The following table lists the services available to support children and young people with SEND in Bury. Many of these services are long standing, routinely commissioned, services as part of the education, social care and health offer. Some elements are recent commissions in response to identified need.

Universal Service	Targeted Service	Specialist Services
<p>Education</p> <p>Early Years Support Services</p> <p>Childminders</p> <p>Playgroups</p> <p>Nurseries</p> <p>Schools</p> <p>Special Educational Needs Co-ordinators in schools (SENCOs)</p> <p>SEMH Partnerships</p> <p>Colleges - Post 16 education</p>	<p>Early Years Support Services</p> <p>Teaching Assistants</p> <p>Special Educational Needs Co-ordinators in schools (SENCOs)</p> <p>Education Psychologist Service</p> <p>Inclusion Support Team</p> <p>Primary Behaviour Outreach Team</p> <p>Sensory Needs Team</p> <p>Additional Needs Team (Cognition & Learning, Communication Difficulties, and Physical Difficulties/Medical Needs)</p>	<p>Enhanced Resource Facilities</p> <p>Early Support Keyworkers</p> <p>Portage</p> <p>Special Schools</p> <p>Education Psychology Service</p> <p>Inclusion Support Team</p> <p>Primary Behaviour Outreach Team</p> <p>Sensory Needs Team</p> <p>Additional Needs Team</p>
<p>Social Care</p>	<p>Early Intervention & Prevention (Early Help services)</p> <p>Short breaks for disabled children (provided through group based activities, individual support at home or in the community)</p>	<p>Social Work</p> <p>Children with Disabilities team</p> <p>Short breaks for disabled children (specialist support)</p> <p>Foster Care</p> <p>Residential Care</p> <p>Transition Support Co-ordinator</p> <p>Co-located Learning Disability Team</p>

	Universal Services (not exhaustive)	Targeted Services	Specialist Services
Health	General Practitioners Midwifery Services Health Visitors School Health Advisors Community Paediatricians Emergency and Walk in provision Sexual health	Allied Health Professionals* Equipment Hospital in patient and out patient services Community nursing Children's Community Nursing Team Learning Disability Children's Community Team	Hospital in patient and out patient services Allied Health Professionals* Children's and adults' Continuing Care Community nursing Palliative Care Services Core Child and Adolescent Mental Health Service (CAMHS) Adult mental health services
Health & Care Jointly Commissioned & Funded between CCG & LA		Targeted Child and Adolescent Mental Health Service (CAMHS) Wheelchair Aids and Equipment	Cambeck Short Breaks

*Allied Health Professionals include physiotherapists, occupational therapists, speech and language therapists and dieticians

Advice and Information

Advice and information about education, health and care provision is available under Bury's published Local Offer hosted on the Bury Directory platform. This information is Bury Council's Bury Directory web page and is available for all parents, children and young people in Bury and provides valuable information to other professionals. It includes telephone contact details for families who require more detailed information and advice on services.

Health advice is provided in the first instance through a family's General Practitioner, or through other primary healthcare professionals such as a child's health visitor. More specialist support is provided in accordance with clinical needs via consultation or appointment after referral.

Early Years advice and support is provided through Local Authority officers including:

- Bury's Parenting & Families Team
- Early Years Advisors (Teachers)
- Children's Centres

Early Years universal support is provided through telephone conversations, Parenting Clinics, Outreach Support, Stay & Plays.

Early Years targeted support includes advice on practice & strategies, facilitation of joint meetings between education professionals and parents, & targeted Stay & Plays.

Education advice is provided through Local Authority officers including:

- Bury's Early Support Team_for pre- school children
- Bury's Virtual School for Vulnerable Children
- School Special Educational Needs Co-ordinators (SENCOs) and Head Teachers.
- Bury Education Psychology Service (EPS) , Additional Needs Team (ANTs) and Sensory Support Service
- Bury Connexions

This information and advice is provided through individual appointments, telephone conversations, and joint meetings between education professionals and parents.

Children's Social Care Services advice is provided for children and young people aged 0-18 from the MASH team who are:

- The single point of access
- Receive referrals and signpost to the Children with Disabilities, Early Help (OASIS) teams as appropriate.

Adult Social Care Services advice will be provided from:

- Officers based in Locality Teams will refer to the Learning Disability (LD) assessment team for information about support services;
- Transition workers will receive referrals for social work intervention, and signposting to appropriate services.
- For adults post 18 years not known to social services they will be referred to the Single Point of Contact Team.

This information is provided by telephone contact in the first instance.

Assessments

Children and young people with special needs may require support to access universal services in Bury. Support is negotiated through assessment and what the individual's priorities are in looking at their own lives and should be developmentally led rather than service led.

All efforts have been made to ensure that transition from Children's to Adults' Services happens as smoothly as possible by using person centred approaches, processes and procedures.

Bury Council and Bury CCG will provide resources and personnel to assess the education, health and care needs of children, young people, and adults. This will be undertaken through:

Health (this is not exhaustive)

- GP health checks
- Health visitor developmental assessments
- Specialist paediatrician assessments
- Therapy services
- Continuing Care assessments

Education

- Early Years Foundation Stage assessments (and supporting systems)
- School systems and processes for identification and assessment of pupils' SEN are set out in each school's SEN Information Report displayed on the school website
- School based assessments of SEN overseen by school SENCO
- Assessments of pupil needs commissioned by schools through Virtual School Central Services

Social Care

- Team around the Child - Early Help Family Support Plan (EHFSP)
- Social Worker Assessment
- Child Protection Assessment and Review
- Looked After Children - Care Plans
- Adult social care assessment (My Adult Care Assessment)

In the majority of cases a child's, young person's or adult's needs will be met through agreed pathways to targeted or specialist services from each respective service area, in accordance with service eligibility criteria.

Decision making panels

The following panels (see Appendix 3) are the main forums for joint multi agency discussion for considering, agreeing and reviewing services for children and young people with SEND:

- Child Development Forum/Centre for pre-school aged children, where there are early indicators of significant additional need. These are attended by Community Paediatricians and other key health areas, and form a key part of the process of health professionals identifying and responding to need.
- Early Years Pre-School & Nursery SEN Panel for pre-school aged children where early indicators of emerging & significant additional needs are considered.
- SEN Panel for school aged children to decide whether an Education, Health and Care Plan (EHCP) assessment is needed to meet needs and to agree provision and outcomes in the EHCP. SEN Panel considers two stages of the graduated approach; the stage of agreeing that an EHC Assessment needs to take place followed by the agreement of whether an EHC Plan is required. Outcomes, resources and provision would then be considered once these two agreements have been made.
- School and Resource Provision Panels for places in special schools, primary and nursery settings
- (Children's Social Care) Disability Resource Management (DRM) Panel for children with complex disabilities, and additional social care needs.
- (Children's Social Care Edge of Care) Early Help Panel for children at risk of entering the care system, where support and interventions required in the community to support the child and family and prevention admission into care. (This may include children and young people with SEN/D).
- Complex Case Panel (CCP) for children (all ages) with complex and severe learning, behaviour, medical and mental health needs, and usually who require specialist residential care provision.
- Adult Care Panel for larger support packages or forms of specialist residential care for those transitioning to 18 plus services.
- (Health) Effective Use of Resources Panel to review requests for health services not routinely commissioned by the CCG.

Future Developments

- Bury Council & Bury CCG are to review all panels during 2018 with a view to rationalizing the number of panels so that there are no overlaps in the focus and purpose of each panel and there is consistency in decision making across age ranges and the domains of education, health and care.

Funding Agreements

Bury Council and Bury Clinical Commissioning Group may agree to jointly fund services for children and young people 0 -25 in the following circumstances:

- On a case by case basis dependent on presenting need
- Where a child meets the Continuing Care threshold, and there is a requirement for short break care for the parent/ carer.
- Where a child meets the threshold for discussion at the Complex Needs Panel, and his/ her needs cannot be met through routinely provided services from education, health or care.

Provision for 0 – 25 year olds

The type of provision that could be made to meet health care and education (non-school) needs includes:

- Commissioned group based activities
- Community based group activities
- Outreach support to enable C&YP to access activities
- Overnight or day time home based short break care from a trained carer
- Out of authority residential homes or residential schools
- Welfare placement in secure unit
- Specialist health provision eg neurology, psychiatry, urology, learning disabilities
- Highly specialist health provision eg cochlear implants
- A multi-dimensional Treatment Foster Care placement (scheme under review)
- An Intensive Foster Care placement
- Other external Specialist Foster Care placement
- A significant package of additional support to enable child or young person to remain in existing provision or in the home

For Young Adults 18-25 year olds:

- Only be eligible for services if they still have an educational need
- Health Services are provided for those with a clinical need (not age dependent).
Patients will be seen by the specialist in the area of their clinical need eg neurologist for complex epilepsy. There is no overarching medic for over 18s except the GP.

Intervention from a relevant health provision eg Learning Disability nurses, neurology, renal services in response to clinical presentation.

For 18 years and over, the following provision (care & independent living) can be provided, subject to assessment and decision making processes:

- Overnight or day time home based respite care
- Overnight residential respite care
- Residential homes
- Shared Lives (Adult Placement) Scheme
- Domiciliary Care
- Supported Living Services
- Supported Tenancy services
- Specialist Day Services

Education Health and Care (EHC) Plans

An Education, Health and Care (EHC) Plan is designed to coordinate all the additional support that a child or young person needs to reach the educational outcomes that are described in the EHC Plan

Bury's SEN Team are responsible for coordinating the statutory assessment process that may lead to an education, health and care plan. The team is also responsible for maintaining and amending Education, Health and Care Plans.

The term special educational needs has a legal definition, referring to children who have learning difficulties or disabilities that make it hard for them to learn than most children of the same age.

Education, health and social care services will ensure that information from needs assessments is provided to SEN Team, when requested, to assist the process of assessment and consultation requiring the need for an EHC Plan, within the required timescales, for the child and young person.

Further information and guidance on EHC Plans is available.

My Adult Care Assessment (MACA)

MACA is completed at age 17 and 9 months by the Children's Social Worker (or earlier if more complex).

An Adult Transition Worker then becomes involved and reviews assessment, and this assessment is put on to the adult system.

An Operations Manager then allocates this to a transition worker or social worker on the Learning Disability (LD) Team.

Support planning takes place, including parents, health, and education, then submitted to the Complex Care Panel as appropriate.

Reviews of services put in place after 6 weeks, and this is then annually reviewed if the support is going well.

Health Care Plans

The Health Care Plan is developed using:

- Child's Health History (from family)
- Routine health information eg from healthy child programme/development milestones

The Health Care Plan will reflect the specific area of need ie SALT OT Physio CAMHS Audiology

Where a child or young person is under the Learning Disability Service, this includes:

- Annual health assessments for over 14s
- A holistic care plan
- Or additional specialist care plan such as for epilepsy or Positive Behaviour Support if needed

Personal Budgets and Direct Payments

A Personal Budget or Direct Payment will be agreed through the following processes:

- On the basis of an assessment undertaken by an education, health, or social care professional (only children with continuing health care packages are eligible for personal health budgets)
- Following agreement by managers from the respective agencies, that the criteria for a personal budget are met
- Following agreement with the parent or young person relating to delivery of the personal budget, through directly provided services, commissioned services, a direct payment, or a combination of these
- Direct payments will be awarded in line with Bury City Council's policies and procedures.

The Disability Resource Panel will be the forum for agreeing personal budgets. See Appendix 3.

Further information relating to Bury's policy on personal budgets is available under Bury's Local Offer.

Carers Assessment

A carer can request a Carers Assessment and this may entitle them to a Carers Allowance

Complaints and disputes

Information about the EHC Plan Appeal Process is available on the Local Offer_website pages.

In the event of a dispute about the joint commissioning arrangements, Bury Council's Directors of Children's and Adults Services, and Bury NHS Clinical Commissioning Group's Chief Officer are ultimately accountable for ensuring issues are resolved⁴.

⁴ Appendix 2 details further information on accountability

Closing Statement

This Joint Commissioning Statement is intended to be a statement of current arrangements (for 2018/19). It is envisaged that systems and processes around commissioning arrangements will change over time as needs and services develop.

The Bury Council and Bury Clinical Commissioning Group are committed to:

- **improving data collection systems** to inform future commissioning
- **enabling services users and their families to have a voice** in the commissioning and review of services. A Commissioners Users and Providers Network will be established as part of the commissioning cycle for reviewing and commissioning of future services.
- **reviewing joint commissioning arrangements** as and when required
- **working together in a co-production relationship with service users and their families** on the development of decisions underpinning the commissioning of future services.

Future Joint Commissioning Statements and processes/procedures will be adapted to reflect any changes made.

Signatories:

Bury CCG: Stuart F North

Position: Chief Officer

Date: 8/8/2018

Bury Children's Services: Leven Dolton

Position: Acting Executive Director

Date: 06/08/18.

Bury Adult Services: June Condo

Position: Interim Executive Director

Date: 8/8/2018

Appendix 1: Relevant legislation & guidance

Extract from Section 26 of the Children and Families Act 2014 (Part3)

- (1) A local authority in England and its partner commissioning bodies must make arrangements 'joint commissioning arrangements', about the education, health and care provision to be secured for -
 - (a) Children and young people for whom the authority is responsible who have special educational needs, and
 - (b) Children and young people in the authority's area who have a disability

- (2) In the Part "education , health and care provision means -
 - (a) Special educational provision
 - (b) Health care provision
 - (c) Social care provision

- (3) Joint commissioning arrangements must include arrangements for considering and agreeing
 - (a) The education, health and care provision reasonably required by
 - (i) The learning difficulties and disabilities which result in the children and young people within subsection (1) (a) having special educational needs and
 - (ii) The disabilities of the children and young people within sub section (1)(b)
 - (b) What education health and care provision is to be secured
 - (c) By whom education, health and social care is to be secured
 - (d) What advice and information is to be provided about education, health and care provision (e) By whom, to whom and how such advice is to be provided
 - (f) How complaints about education, health and care provision may be made and are to be dealt with
 - (g) Procedures for ensuring that disputes between the parties to the joint commissioning arrangements are resolved as quickly as possible

- (4) Joint Commissioning arrangements about securing education health and care provision must in particular include arrangements for-
 - (a) Securing EHC needs assessments
 - (b) Securing the education, health and care provision specified in the EHC plans
 - (c) Arranging personal budgets under section 49

Other relevant legislation

Care Act 2014

Children Act 1989 (Schedule 2, sections 17 and 47)

Children Act 2004

Children and Families Act 2014 (sections 24-28, 31)

Chronically Sick and Disabled Persons Act 1970

Equality Act 2010 (including disability equality duty under
section 149) Health and Social Care Act 2012

NHS Act 2006 (Part 3, section 75 and 1422)

Appendix 2: Local accountability⁵

Agency	Key responsibilities for SEN or Disability	Accountability
Local Authority	Leading integration arrangements for Children and Young People with SEN or disabilities	Lead Member for Children and Young People's Services and the Executive Directors for Children's (DCS) and Adult Services
Children's and Adult Social Care	Children and adult care services must cooperate with those leading the integration arrangements for children and young people with SEN or Disability to ensure the delivery of care and support is effectively integrated in the new SEN system.	Lead Member for Children's Services and Lead Member for Adult Social Care, and the Executive Directors for Children's and Adult Services
Clinical Commissioning Group	To co-operate with the local authority in jointly commissioning services, ensuring there is sufficient capacity contracted to deliver necessary services, drawing the attention of the local authority to groups and individual children and young people with SEN or disabilities, supporting diagnosis and assessment, and delivering interventions and review.	<p>CCGs will be monitored by NHS England.</p> <p>CCGs are also subject to local accountability, for example, to the Health and Wellbeing Board for how well they contribute to delivering the local Health and Wellbeing Strategy.</p> <p>Each CCG has a governing body and an Accountable Officer who are responsible for ensuring that the CCG fulfils its duties to exercise its functions effectively, efficiently and economically to improve the quality of services and the health of the local population whilst maintaining value for money.</p>

⁵ Adapted from special educational needs and disability code of practice: 0 to 25 year. Statutory guidance for organisations who work with and support children and young people with special educational needs and disabilities' (DfE & DoH; June 2014)

<p>Health and Wellbeing Board</p>	<p>The Health and Wellbeing Board must ensure a joint strategic needs assessment (JSNA) of the current and future needs of the whole local population is developed. The JSNA will form the basis of NHS and local authorities' own commissioning plans, across health, social care, public health and children's services.</p> <p>This is likely to include specific needs of children and young people with SEN or disabilities.</p>	<p>Membership of the Health and Wellbeing Board must include at least one local elected Councillor, as well as a representative of the local Healthwatch organisation. It must also include the local DCS, and senior CCG and Director of Public Health.</p> <p>In Bury, the Health and Wellbeing Board is chaired by Lead member for Health & Wellbeing.</p>
<p>Bury Council Overview and Scrutiny Committee</p>	<p>The role of Scrutiny Committee is to review and/or scrutinise decisions made or actions taken or proposed in connection with the discharge of any of the Council's functions; and make reports and/or recommendations to the full Council and/or the Cabinet in connection with the discharge of any functions;</p>	<p>A cross party committee of elected members (without portfolio) and non-Cabinet members; which sets its own work-plan and reports to Council (section 21 of the Local Government Act 2000 and regulations under section 32 of the Local Government Act 2000).</p>
<p>Bury Children's Safe-Guarding Board</p>	<p>The functions of the LSCB are to develop policies and procedures for safeguarding and promoting the welfare of children and monitoring and evaluating the effectiveness of what is done by the authority and their Board partners individually and collectively to safeguard and promote the welfare of children</p>	

NHS England	<p>NHS England commissions specialist services which need to be reflected in local joint commissioning arrangements (for example augmentative and alternative communication systems, or provision for children and young people in the secure estate or secure colleges).</p>	Secretary of State for Health
Healthwatch	<p>Local Healthwatch organisations are a key mechanism for enabling people to share their views and concerns - to ensure that commissioners have a clear picture of local communities' needs and that this is represented in the planning and delivery of local services. This can include supporting children and young people with SEN and disabilities.</p>	<p>Local Healthwatch organisations represent the voice of people who use health and social care on the Health and Wellbeing Board. They are independent, but funded by local authorities.</p>
Maintained nurseries, schools (including academies)	<p>Mainstream schools have duties to use best endeavours to make the provision required to meet the SEN of children and young people. All schools must publish details of what SEN provision is available through the SEN Information Report and co-operate with the local authority in drawing up and reviewing the Local Offer.</p> <p>Schools also have duties to make reasonable adjustments for disabled children and young people, to support medical conditions and to inform parents and young people if SEN provision is made for them.</p>	School governors are accountable

<p>Colleges</p>	<p>Mainstream colleges have duties to use best endeavours to make the provision required to meet the SEN of children and young people. Mainstream and special colleges must also co-operate with the local authority in drawing up and reviewing the Local Offer.</p> <p>All colleges have duties to make reasonable adjustments for disabled children and young people.</p>	<p>The Board of Governors is the accountable.</p>
<p>Special Post 16 Institutions (SPIs)</p>	<p>Special Post 16 institutions are legally established to provide education (but are not FE colleges) and provide specialist post 16 education and support to young people with some of the most severe learning difficulties and disabilities. As SPIs do not have a distinctive definition in law, they are required to be on the Section 41 list and are subject to duties in the Act 2014 to co-operate on the arrangements for SEN children and young people and have regard to the statutory guidance.</p> <p>SPIs must also co-operate with the local authority in drawing up and reviewing the Local Offer.</p>	<p>The Board of Governors is the accountable.</p>

Appendix 3: Local Panels in Support of SEND

Panel	Purpose	Composition/Membership
Disability Resource Management (DRM) Panel	This Panel considers funding packages of care for children who need support services.	Children's Social Care Managers/Officers
Complex Case Panel (CCP)	This panel considers funding packages to support highly complex health/social care and/or educational needs.	Bury Children's Social Care Bury Adult Care Services Bury CCG
SEN Panel	The Panel ensures that there is consistent and transparent decision making across education, health and social care in response to referrals for an EHCP; whether an EHCP is required following an assessment and the resource allocation for any Plan.	Children's SEN/Education Officers School HT Representatives School SENCOs Health Representatives Social Care Representatives CCG Designated Clinical Officer
Adult Care Panel	This Panel considers complex packages of care that are over the Operations Manager approval level.	Adult Social Care Managers/Officers
Early Years Pre School & Nursery SEN Panel	This Panel is considers cases of pre-school aged children where there are early indicators of emerging & significant additional needs and is part of the process for education and health professionals identifying and responding to needs.	Children's SEN Manager/Officers Representatives from the EPS & OT Service Specialist Health Visitor
Early Help Panel	This Panel considers cases on the edge of care that have been assessed for intervention by the Oasis Team and agrees the allocation of a worker.	Held every fortnight and consists of a number of professionals from children's social care operational teams and partner organisations.
Effective Use of Resources Panel	This Panel considers requests for services not routinely commissioned by the CCG. This is on an individual case by case basis with appropriate supporting clinical evidence.	Meets monthly. Chaired by a GP with other doctors and senior management representative
Child Development Forum/Centre	This multi-disciplinary assessment team considers the health needs of pre-school aged children, where there are early indicators of significant additional need. This includes a referral panel, assessment and review as well as the Autism Pathway.	Community Paediatricians SALT OT Physiotherapists Orthoptist Educational Psychologists

<p>School Panels:</p> <ol style="list-style-type: none"> 1. Millwood Primary School 2. Mersey Drive Community Primary School (ASD Enhanced Provision – 12 places) 3. Unsworth Community Primary School (Speech and Language Enhanced Provision – 14 places) 4. Hoyle Nursery School (Social & Communication Resourced Provision – 6 places) 	<ol style="list-style-type: none"> 1. To consider referrals for the following September intake 2. To consider applications for specialist support for children with social communication difficulties and/or a diagnosis of ASD at key stage 1 and 2 (reception to year 6) 3. To consider referrals for early intervention support for children with severe/complex speech and language disorders (reception to year 6) 4. To consider referrals from Educational Psychology Service for children with social communication difficulties at Foundation Stage 1 	<ol style="list-style-type: none"> 1. School and Local Authority; meets once a year in January 2. If entry criteria met, termly placement meetings: Head teacher/SENCO/Teacher Representatives from EPS ANTS and SEN Team 3. School and Local Authority; meets annually 4. Representatives from School, SALT, EPS, ANTS and SEN Teams
---	--	---

