



# **BURY DOMESTIC VIOLENCE AND ABUSE STRATEGY 2018 - 2021**

## FOREWORD

Domestic Violence & Abuse (DVA) can happen to anyone and does not discriminate. Understanding why a relationship becomes abusive can be particularly complex and is often linked to other social issues that may be experienced by one or both partners.

The effects of Domestic Abuse do not begin and end with the victim – the whole household suffers. More than 750,000 British children a year witness Domestic Abuse. In Bury the majority of high-risk cases that are reported to the Police have a child in the Household.

Domestic Violence and Abuse covers a whole range of abuse-types which can only be tackled through a robust multi-agency response. For these reasons, Domestic Violence and Abuse remains a key priority for Team Bury.

This strategy aims to provide the context and direction for the development of initiatives and services across Bury. With strong commitment of partner agencies to work together we believe we can deliver better outcomes for families.

We have identified the following priorities which will form the bedrock of an Action Plan to strive towards the aspiration of eliminating Domestic Abuse in Bury:

1. Improve Strategic Co-ordination
2. Reduce re-offending
3. Reduce re-victimisation
4. Remove inequalities and gaps in provision
5. Enhance workforce development
6. Further develop primary prevention approaches

### Joint Chairs of Bury's Domestic Abuse Strategic Group



Councillor Tamoor Tariq  
(Cabinet Member for Communities & Safer Neighbourhoods)



Karen Dolton  
(Interim Director of Children's Services)

## KEY STRATEGIC DRIVERS

### Bury Domestic Violence & Abuse Health Needs Assessment 2017

This was commissioned by the Domestic Abuse Strategic Group to inform this Strategy and the commissioning of Domestic Abuse services across Bury.

The findings from this assessment were fed into this Strategy.

### Government Violence against Women & Girls Strategy

Our strategy embraces the ethos and approach of the national strategy, recognising that the vast majority of victims are women but is inclusive, acknowledging that men can also be victims.

[www.gov.uk/government/publications/strategy-to-end-violence-against-women-and-girls-2016-to-2020](http://www.gov.uk/government/publications/strategy-to-end-violence-against-women-and-girls-2016-to-2020)

### The National Institute for Health and Care Excellence (NICE)

NICE has developed guidance on multi-agency working to highlight the need for co-ordinated partnership working at operational and strategic levels, along with training and organisational support.

[www.nice.org.uk/Guidance/PH50](http://www.nice.org.uk/Guidance/PH50)

## KEY ACHIEVEMENTS

In developing this strategy we have reviewed work of partners to learn what has worked and to recognise the achievements made from 2015-18:

### Improving prevention and early intervention:

- Created a suite of information on the Bury Directory for anyone to access to learn more about Domestic Abuse and how to seek help.
- Delivered training to increase awareness amongst professionals of Female Genital Mutilation and Honour Based Violence
- Rolled out Operation Encompass, which gives schools the information to provide early support to children whose parents have been the victim of Domestic Abuse.
- Developed the Strive model of providing early support via Volunteers to standard-risk victims of Domestic Abuse
- Children & Young Persons Domestic Violence Worker in place, providing support to children affected by DVA

### Changing behaviours and attitudes:

- Developed a successful Perpetrator programme from which we learned a great deal about the best way to engage Perpetrators and begin the process of changing their behaviour.
- Ran a multitude of campaigns across different strands of Domestic Abuse; from 'Sitting Right with You' & 'White Ribbon', large-scale campaigns to local single-issue campaigns like 'Ask for Angela'
- 'Voice of the Child' training rolled out to all Police Officers
- All GP surgeries receive DVA resources and displays

### Strong leadership and management:

- We commissioned a Health Needs Assessment to cast a critical eye over the strategic direction of Domestic Abuse provision
- Standardised the approach to training across Partners to ensure all services (statutory and third sector) can access DVA training
- Developed a shared Action Plan created with input from all services
- Domestic Abuse Forum created to give a specific voice to third sector and Service Providers

### Reducing repeat victimisation:

- Secured funding for refuge provision with specialist support
- IDVA service re-tendered ensuring support for high-risk victims
- Victim Services model embedded with Independent Victim's Advocates receiving DVA referrals

## NATIONAL CONTEXT

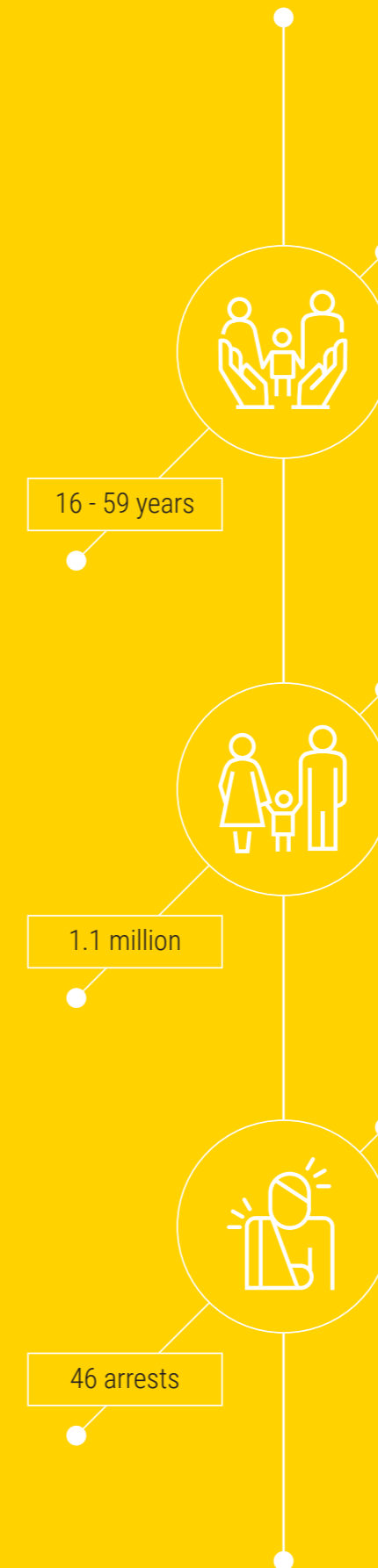
Domestic abuse occurs across our society regardless of age, gender, race, sexuality, wealth, and geography of the victim or perpetrator. DVA touches the lives of many.

Evidence shows that women disproportionately experience domestic abuse. It is an internationally recognised phenomenon rooted in gender inequality and historic gender-based roles.

An estimated 1.9 million adults aged 16 to 59 years experienced domestic abuse in the last year, according to the year ending March 2017 Crime Survey for England and Wales (1.2 million women, 713,00 men).

The police recorded 1.1 million domestic abuse-related incidents and crimes in the year ending March 2017 and of these, 46% were recorded as domestic abuse-related crimes; domestic abuse-related crimes recorded by the police accounted for 32% of violent crimes.

There were 46 arrests per 100 domestic abuse-related crimes recorded by 39 police forces in the year ending June 2017.

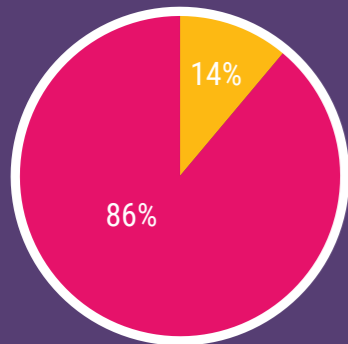


## LOCAL CONTEXT

The following graphs provide a snapshot of the Domestic Abuse landscape in Bury at the moment. However, it should be noted that an estimated 70% of domestic violence incidents go unreported.

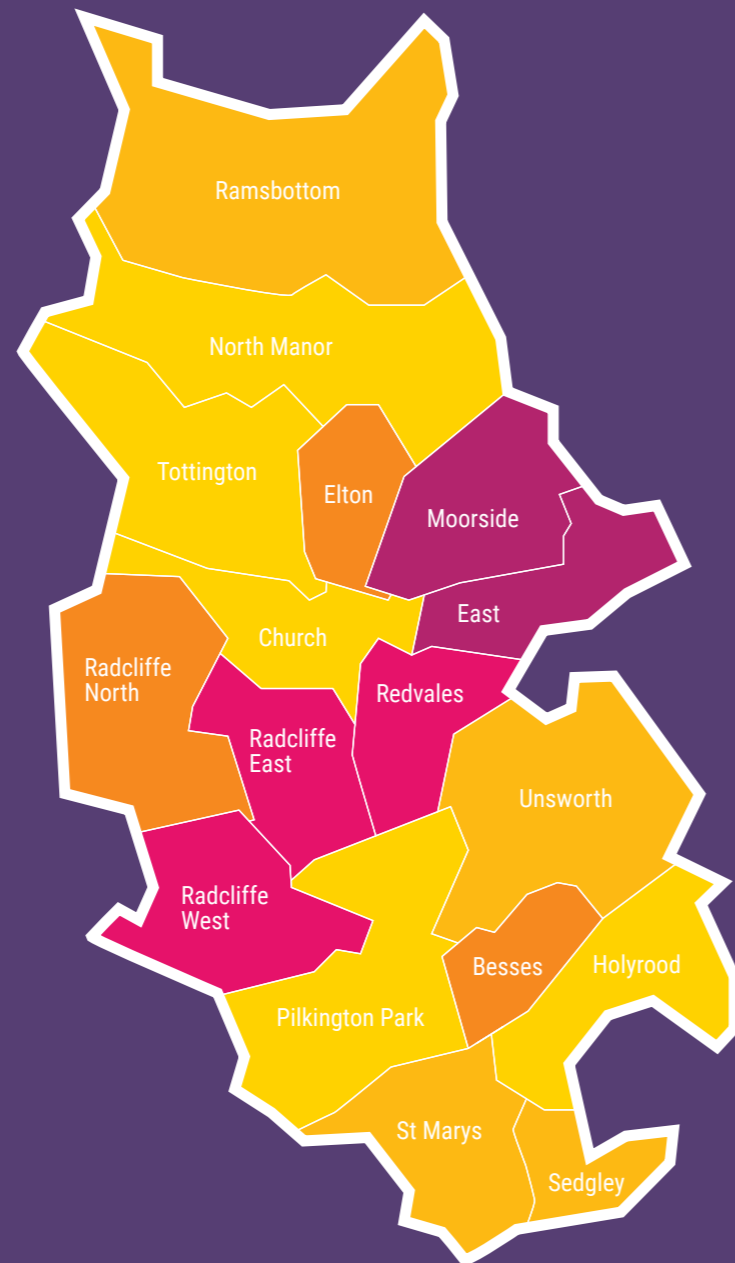
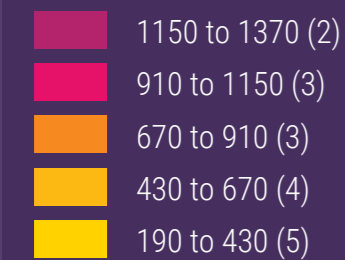
Nationally it was reported in 2017 that Domestic Abuse accounts for about 11% of all crimes so Bury suffers disproportionately from this issue.

DVA as a proportion of total crime in Bury.

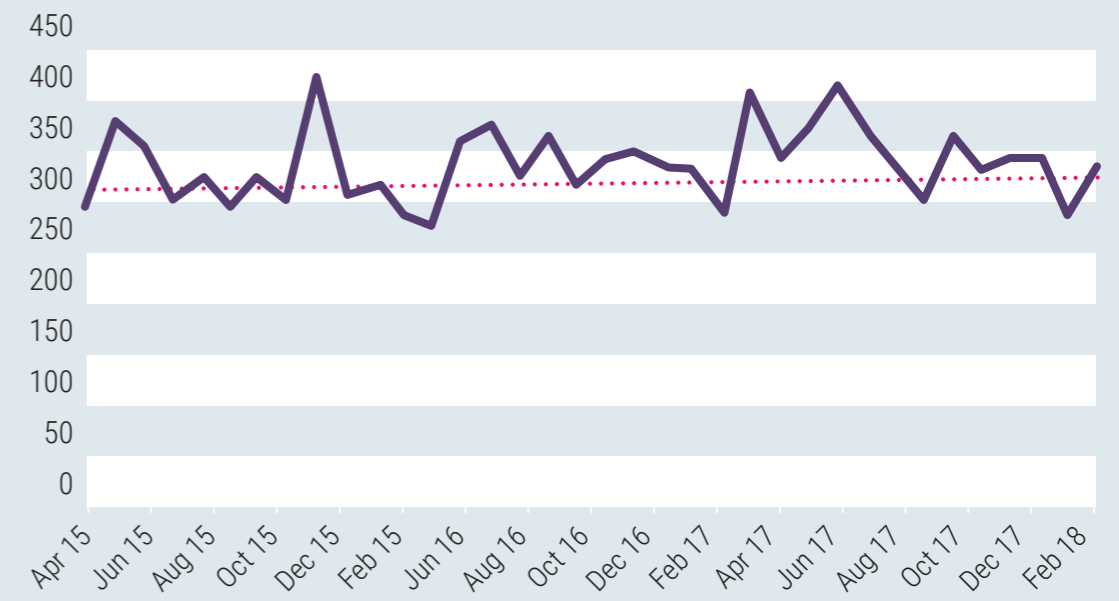


The areas that suffer from the highest rates of DVA are also those which experience the highest levels of deprivation. While being mindful of under-reporting, identifying 'hotspot' areas enables us to focus efforts on reducing victimisation and reoffending in the areas of greatest need.

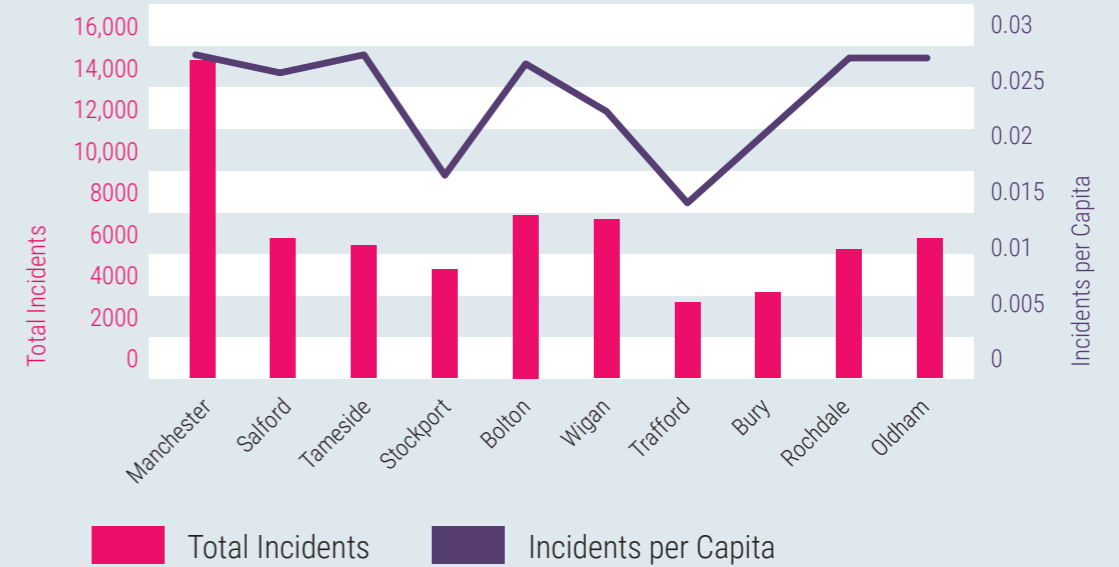
Domestic abuse incidents 2015 - 2018  
Numbers by Ward



Bury District 2015 - 2018 DA incidents

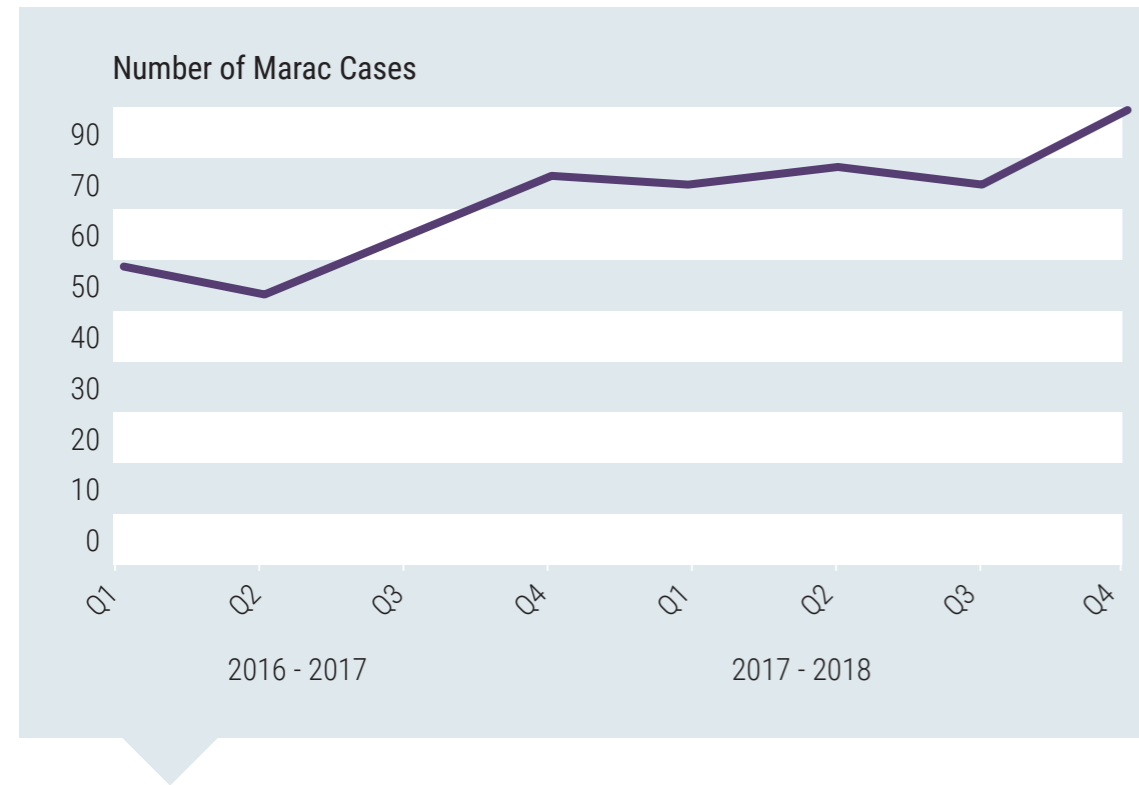


Greater Manchester DA incidents 2017 - 2018



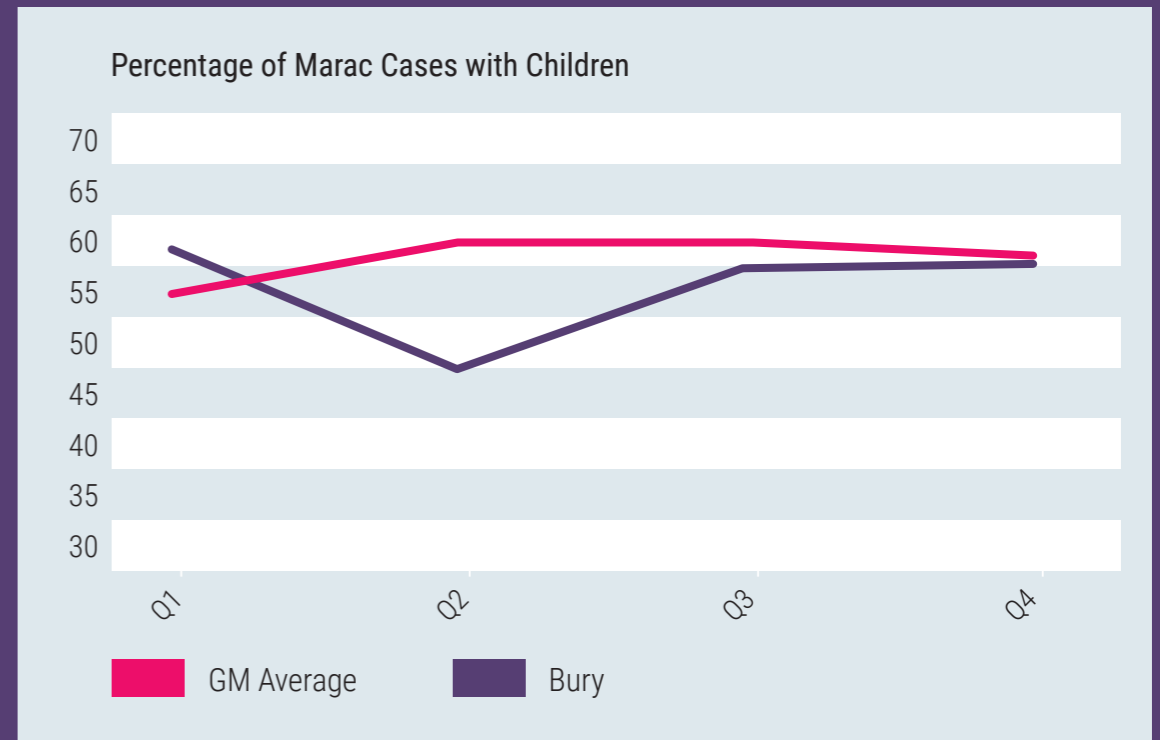
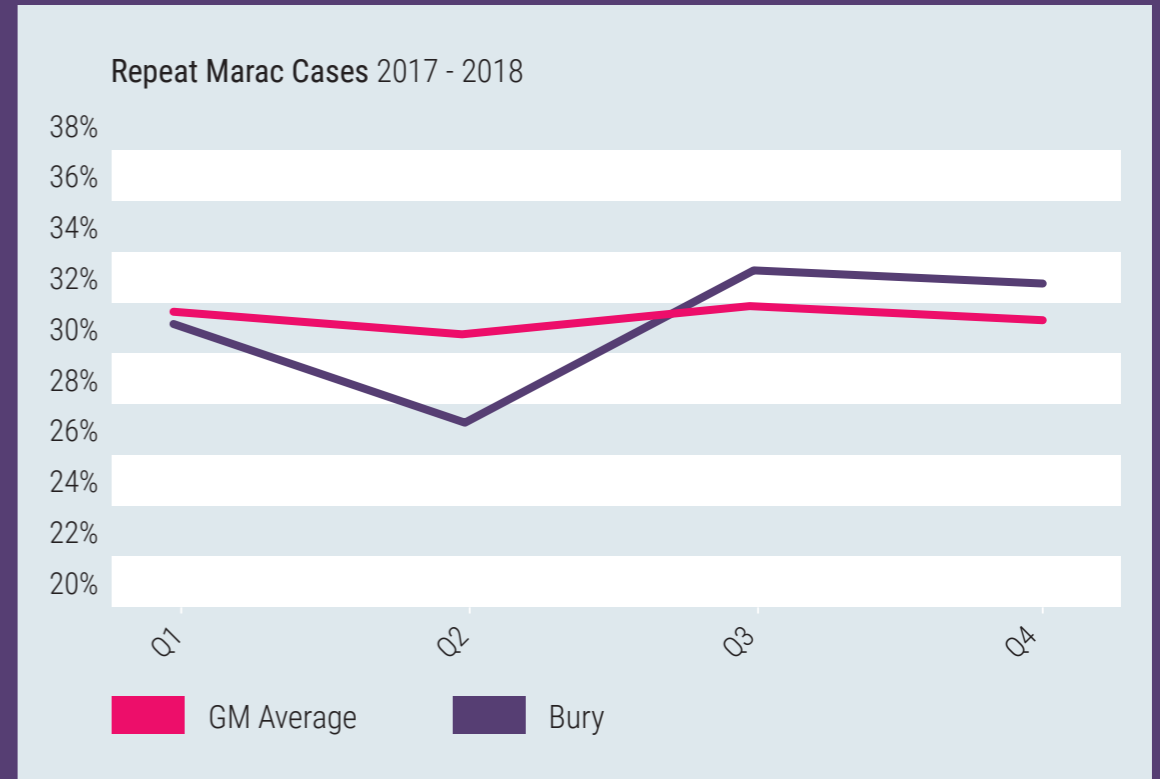
The trend over the three years has been a very gradual uplift in incidents, with the average for 17/18 being 5% higher than the average for 15/16. Although Bury has the second-lowest number of incidents across GM; per head of population we fare a little worse.

## LOCAL CONTEXT



MARAC is the Multi-Agency Risk-Assessment Conference which looks at High-Risk cases of Domestic Abuse. Again, the trend over 2 years is an upward one, demonstrating not only that we are getting more complex, high-risk cases.

Bury's repeat cases follow the GM average pattern. With an average of 30% of cases being repeat, we need to ensure we intervene early to break the cycle. (infographic shown overleaf)



With close to 60% of all cases at Bury's MARAC having children in the families and nationally 62% of children being harmed in households where Domestic Violence and Abuse is prevalent we need to ensure that we have appropriate services intervening at the right time.

## GOVERNANCE

Bury's Domestic Violence & Abuse Strategic Group is responsible for delivering a multi-agency approach to tackle domestic abuse. The Group operates within the governance structure below, ensuring that the effective implementation of our strategy supports the wider work to tackle abuse across statutory and voluntary partnerships.

The DVA Forum comprises 3rd Sector Partners and feeds into the Strategic Group to enable them to focus on effective practice and commissioning.



## PRIORITIES

These are the overarching areas of work that Bury's Domestic Abuse Strategic Group and its wider partners will focus on over the next 3 years. These themes will form the basis of a partnership action plan which will detail how these objectives will be delivered.

### Objective 1

#### Strategic Coordination

- Develop an Action Plan with shared outcomes & accountability
- Engage key personnel to gain commitment to the Strategy and drive forward Partnership initiatives & commissioning
- Engage with GMCA to cascade best practise information locally and develop Partnership working initiatives across the conurbation.
- Robustly evaluate all services related to Domestic Abuse operating in the borough.
- Ensure that a process is in place to share learnings from Domestic Homicide Reviews and that Actions and Recommendations are completed

### Objective 2

#### Reducing Reoffending

- Measure impact of existing interventions
- Work with GMCA to develop GM-level initiatives
- Develop pathways for perpetrators and monitor wider holistic DVA referrals

### Objective 3

#### Reduce Re-victimisation

- Consult with Customers to understand their journey and the effectiveness of services
- Embed Victim Services Model throughout borough
- Undertake targeted campaigns for professionals around civil orders
- Understand and intervene on impact of Domestic Abuse on victims to prevent re-victimisation

## PRIORITIES

---

### Objective 4 Inequalities / Gaps in provision

- Use information gleaned through consultation process to understand under-reporting issue
- Develop initiatives to remove barriers for minority groups and under-reporting groups
- Develop process for development and management of Outcome Based Accountability scorecard
- Develop approaches to produce data around non-intimate DVA to measure the extent and impact of the issue.

### Objective 5 Workforce Development

- Map current training and review if fit for purpose
- Develop a suite of Quality-assured DVA training with a range of options for all services/sectors
- Measure effectiveness of all training delivered

### Objective 6 Primary Prevention

- Undertake multi-platform awareness-raising campaigns across a number of issues, ensuring effective evaluation
- Develop consistent early intervention processes and healthy relationship packages for schools/young people
- Understand impact of DVA on Children

## KEY OUTCOMES

---

- A safer, more supportive place to live for individuals and groups at risk of Domestic Violence and Abuse
- An informed population who know how to access help and support related to Domestic Violence and Abuse

## KEY INDICATORS

---

- An effective, coordinated, multi-agency response to Domestic Abuse that is flexible and responds to changes in local need
- Resources identified across all agencies that can contribute to tackling Domestic Abuse and then allocated to maximise efficiencies and cost-effectiveness
- Bury residents understand what is meant by Domestic Abuse and that they know how to access help
- People experiencing Domestic Abuse access effective support which meets their needs
- Processes are in place to identify and support children and young people at risk of domestic abuse (via witnessing adults and/or own relationships) and to promote healthy relationships
- Perpetrators of domestic abuse do not repeat their abusive behaviour
- Practitioners, organisations and businesses are trained to identify victims and signpost or provide appropriate support

## MONITORING AND MEASURING THE IMPACT

---

Bury's Community Safety Partnership (CSP) will have ultimate responsibility for the delivery of Bury's Domestic Violence & Abuse Strategy and will oversee the development of an Action Plan that will pull together all the key priorities

The CSP will review the strategy on an annual basis and will consider the following:

- Progress made against the strategy's objectives.
- The overall impact and effectiveness of the strategy.
- New legislation or government directives for incorporation in the Strategy.
- Local need and any other emerging priorities.
- Whether actions and activities are achieving the required outcomes.
- Engagement with partner boards
- The progress of the Domestic Abuse Strategic Group which will be responsible for developing the Action Plan that will outline the key activities to be delivered over the next 3 years. They will report back to the CSP on a quarterly basis.



If you need help understanding this document:

Contact: Community Safety Manager  
Service: Bury Council, Community Safety Team  
Email: [communitysafetyteam@bury.gov.uk](mailto:communitysafetyteam@bury.gov.uk)  
Tel: 0161 253 5099

Address: Room 26, Bury Town Hall,  
Knowsley Street, Bury. BL9 0SW

