



Childcare Sufficiency 2015



Update on the sufficiency of childcare places in Bury

March 2015

Bury
COUNCIL

Contents

	Page(s)
1. Introduction	3
2. Aims and Objectives	4
3. Demand Data	4
a) Family Information Service	4
b) Unmet demand	4
c) Free Places for Two year old children	4 – 5
d) Plan for Two Year Old Places Table	5
e) Plan for places (additional information)	6
f) Areas of concern	6
g) Free places for Three and Four Year Old Children	6
h) Childcare for older children	7
4. Supply data	7
a) Accessibility	8
b) Affordability	9 - 10
c) Quality	10 - 11
5. Report Card – Bury Sufficiency Assessment	12 - 13
6. Overall Sufficiency score	14
7. Ward map of Bury with Sufficiency RAG rating	15

1. Introduction

The Local Authority has a legal duty under the Childcare Act 2006 to secure sufficient childcare, as far as is reasonably practicable, for working parents, or parents who are studying or training for employment, for children aged 0-14 (or up to 18 for disabled children).

In order to comply with this legislation local authorities should:

Take into account what is 'reasonably practicable' when assessing what sufficient childcare means in their area and:

- the state of the local childcare market, including the demand for specific types of providers, in a particular locality and the amount and type of supply that currently exists.
- the state of the labour market
- the quality and capacity of childcare providers, including their funding, staff, premises, experience and expertise
- encourage schools in their area to offer out-of-hours childcare between 8.00am and 6.00pm and to offer 5 hour rather than 3 hour sessions
- encourage existing providers to expand their provision and new providers to enter the local childcare market.
- the legal entitlement to early education for around the 40% most disadvantaged two-year-olds and all three and four year olds

Local authorities should also report annually to elected council members on how they are meeting their duty to secure sufficient childcare, and make this report available and accessible to parents.

Local authorities are responsible for determining the appropriate level of detail in their report, geographical division and date of publication. The report should include:

- a specific reference to how they are ensuring there is sufficient childcare available to meet the needs of disabled children, children from families in receipt of the childcare element of Working Tax Credit or Universal credit, children with parents who work irregular hours, children aged two, three and four taking up early education places, school age children and children needing regular holiday care.
- information about the supply of and demand for childcare for particular age ranges of children, and the affordability, accessibility and quality of provision
- details of how gaps in childcare provision will be addressed

2.Aims and objectives

This report will provide an update on the current state of supply and demand for childcare since the last assessment in September 2013 addressing the specific areas and references required by government guidance.

This report will be shared with Elected Members and made available to a wider audience through publication on Bury Council's website.

3. DEMAND DATA

A recent telephone survey has been carried out using a sample of parents who are registered and attend their local Children's Centre. 225 parents were listed for contact and 72 responses were obtained. The results are as follows:

Parents aware of the Free Early Education and Childcare (EEC) places for 2, 3 and 4 year olds	90%
Parents who knew where they could find information and advice on EEC and how to find other childcare	81%
Parents who knew about the eligibility criteria for 2 year old places	76%
Parents aware that their child's 15 hour free early education place can continue until they reach school age	75%

a) Family Information Service

The Family Information Service has a web based directory of services that all families can access for information on early education, childcare, services and activities for children and young people. The website is currently being integrated into The Bury Directory which incorporates information on the local offer of services for children and young people with special educational needs or who have a disability.

b) Unmet demand

Parents are encouraged to use web based information to search and identify solutions to their childcare requirements. If after accessing this service they require additional support a brokerage service is available. Any instances of unmet demand are recorded and advertised both on the website and in email communications to providers.

c) Free Places for Two year old children

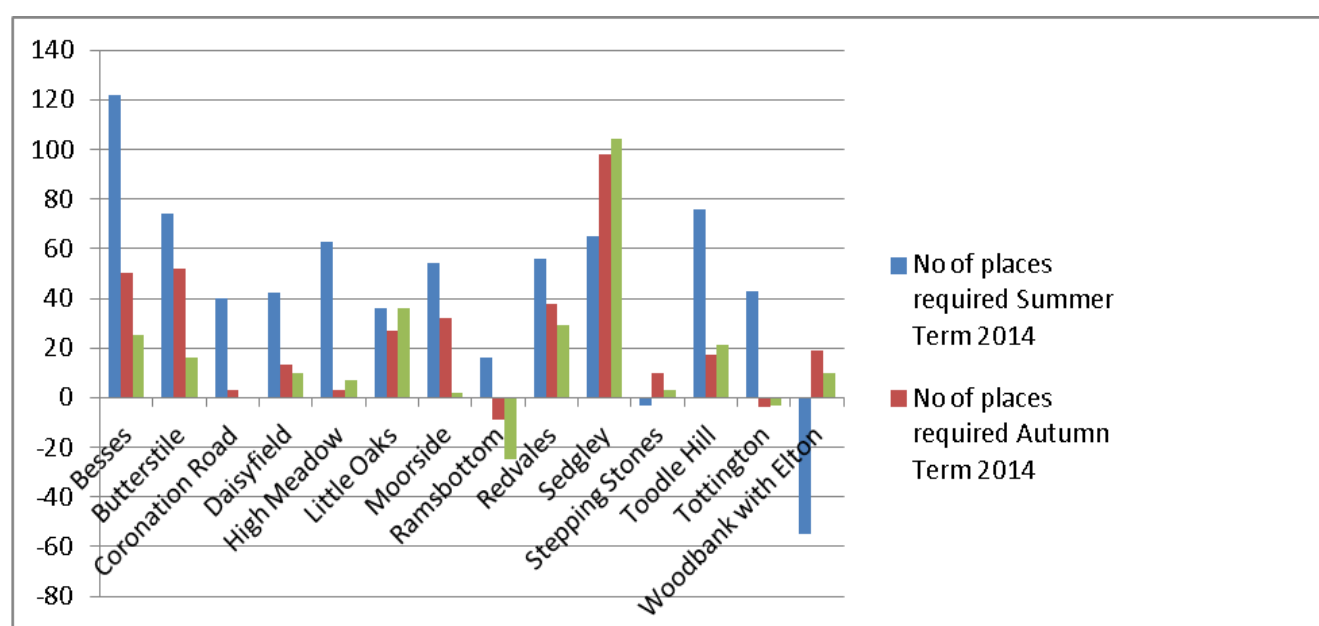
From September 2014, up to 40% of two year olds have been entitled to a free 15 hour place. An electronic list is received from the DFE/DWP on a termly basis which gives address details of eligible families, this list is soon to be increased to seven times a year. This information is mapped by Childrens Centre reach area to give a clear picture of potential demand.

Providers are encouraged to expand their provision where demand exists and information they have provided on vacancy rates has been compared against demand figures to reflect the current position with regard to sufficiency.

The following table gives a more detailed summary of capacity but should be viewed with caution as there are clear fluctuations in demand for childcare across the three terms.

d) Plan for Two Year Old Places Table

Children Centre	No of places required Summer Term 2014	No of places required Autumn Term 2014	No of places required Spring Term 2015
Besses	122	50	25
Butterstile	74	52	16
Coronation Road	40	3	0
Daisyfield	42	13	10
High Meadow	63	3	7
Little Oaks	36	27	36
Moorside	54	32	2
Ramsbottom	16	-9	-25
Redvales	56	38	29
Sedgley	65	98	104
Stepping Stones	-3	10	3
Toodle Hill	76	17	21
Tottington	43	-4	-3
Woodbank with Elton	-55	19	10
TOTAL	629	349	235



e) Plan for Places – additional information

The figures show that overall there has been a decrease in the estimated number of new places required from 629 in Summer 2014 to 235 in Spring 2015, a number of factors have contributed to this including:

- Existing providers expanding their provision
- New providers opening provision
- 'Good or outstanding' childminders being added to the directory

We are unable to estimate how many non-funded children may take up a place and therefore formulas are based on a 'best guess' using local knowledge.

Termly lists from the Department for Education & Department for Work & pensions at postcode level have allowed us to analyse data at street level for the Autumn 14 and Spring 15 terms. Results show a reduction in the number of new places required particularly in the Besses area. Whilst this number has reduced, the actual take up of places is gradually increasing and currently stands at 62% with additional cross border and second headcount information still to come.

f) Areas of concern

Sedgley - The figures for this area indicate a widening capacity concern, however, the cultural make up of the community makes this a more complex issue. Local knowledge suggests that parents either do not wish to take up their place or require Orthodox Jewish provision only and a number of families do choose to access provision over the border in Salford. A more in-depth analysis is required in this area and will be undertaken.

Little Oaks & Redvales - these adjoining areas both have high numbers of eligible children and whilst take up rates are above the Bury average at 64%, the data shows a clear need for more high quality provision in this area.

g) Free Places for Three and Four Year Old Children

In Bury 96% of all eligible 3 & 4 year olds (5115) were accessing some or all of their free early education place in January 2015 which is inline with national statistics. The following information has been taken from the Early Years Census, collected and reported on by the DFE. A copy of the full statistics can be found at: <https://www.gov.uk/government/statistics/provision-for-children-under-5-years-of-age-january-2015>

	3 & 4YO		3YO		4YO	
	No	%	No.	%	No.	%
PVI	1814	36.95%	1365	56.83%	449	17.90%
Maintained	3096	63.05%	1037	43.17%	2059	82.10%
Total	4910		2402		2508	

h) Childcare for older children

There are many models of delivery for before and after school provision for 5-11 year olds ranging from Out of School clubs on school sites to private nurseries and childminders who often provide a school pick-up service.

Changes to the way Ofsted register and apply places to early years and childcare providers make it very difficult to calculate sufficiency based on supply and demand for different age groups.

As provision that is school managed is no longer recorded as before it is difficult to ascertain the real level of supply, however providers are encouraged to be registered on the Ofsted voluntary register so that parents can claim Working Tax Credits/Universal Credit. Unmet demand has been recorded for a small number of parents who have reported difficulties in identifying appropriate before and after school provision to meet their needs.

This information is shared widely with childcare providers and schools; however, demand has not translated into sufficient numbers at a local level to make it a viable business proposition.

A brokerage service has been offered and on some occasions parents have been able to resolve their childcare needs by considering alternative types of provision such as childminders.

Childcare for 11 to 14 year olds generally does not relate to meeting the needs of working parents and tends to lean heavily towards informal activity based sessions usually in the holidays or early evenings.

Holiday provision can include formal, registered provision which is aimed at meeting the childcare needs of working parents and holiday activity sessions including Playschemes and mobile play provision, which offer social activities for children outside school term times.

There is also a range of free play and activity sessions which run across the borough by local voluntary and community sector partners and a range of holiday sports schemes that run on a casual basis. The Bury Directory holds a comprehensive list of provision and this can be accessed on line at www.theburydirectory.co.uk

4. SUPPLY DATA

All childcare provider information is held on a Tribal database and any changes to Ofsted registration details, including inspection grades, is updated automatically through an electronic data transfer process.

A provider portal allows individual settings to update their details remotely and they are encouraged to do this on a regular basis. This information, which may include details of vacancies, charges, opening hours etc. is held centrally and with permissions is available to parents and others searching for childcare. In addition an annual census is carried out in January of each year by the DFE. The

results of the census alongside the Tribal database will be used to provide information for the purposes of this report.

a) Accessibility

Disabled children

The Reaching Children & Families Team who sit within the wider Early Years Team provide training and support to childcare providers to enable them to offer an inclusive childcare provision which allows all children, and particularly those with additional and complex needs, to access childcare.

Information about settings SENCO (Special Educational Needs coordinator), experience, training and qualifications relating to disabled children and children with SEN (Special Educational Needs) is included in The Bury Directory. A brokerage service is available and parents can receive one-to-one support to enable them to access their choice of provision. The support involves discussion with parents and other specialist agencies to assess the child's needs, plus close collaboration with early years settings to ensure that the child can access early learning and childcare opportunities effectively.

Funding is available for equipment and additional staff resources and a clear application procedure is in place for childcare providers to apply. Since October 2013 a total of 39 children aged between 0-4 years old have been supported to access provision. The majority of these children are two year olds.

Shift workers

Childminders within Bury are able to offer the most flexibility around opening hours with the ability to open earlier or later than childcare on non-domestic premises. The flexibility of childcare providers is recorded on the Tribal database so that parents are able to carry out online searches as and when required. The data tells us that we currently have 21 childminders across the borough who offer shift cover/unsociable hours and weekends by prior arrangement. Three childminders and one day nursery currently offer overnight care.

b) Affordability

Provider Type		Cost Week	Cost Day	Cost Hour
Childminder	Highest	£175.00	£45.00	£5.00
	Lowest	£90.00	£20.00	£2.25
	Average	£132.30	£28.80	£3.50
	North West	£164.42		
	National	£196.55		
Nursery	Highest	£205.00	£47.00	£8.00
	Lowest	£145.00	£32.00	£3.50
	Average	£173.00	£39.80	£5.15
	North West	£177.06		
	National	£212.09		
Holiday Scheme	Highest	£180.00	£39.50	£5.00
	Lowest	£65.00	£6.00	£4.00
	Average	£109.00	£21.80	£4.50
Out Of School Club	Highest	£115.00	£20.00	£25.00
	Lowest	£25.00	£6.00	£2.25
	Average	£56.90	£11.50	£4.40
Pre-School Playgroup	Highest	£180.00	£41.00	£4.50
	Lowest	£55.00	£12.00	£3.50
	Average	£105.50	£25.00	£4.25

The table shows that average childcare costs in Bury for childminders is currently £132.30 per week and for nurseries £173. The highest charge for a nursery place in Bury is £205 which is less than the national average.

The cost of childcare in the North West remains lower than average

Information on financial support to help with childcare costs is available on line through www.theburydirectory.co.uk and includes working tax credit, childcare vouchers and funded places for two, three and four year old children

Supported Childcare Solutions

An established scheme is in place to identify appropriate childcare provision for children and families in need who do not have the means to fund themselves. These families are identified by Children's Centres or Social Workers through the Early Help team and can range from 6-12 weeks of emergency childcare during a family crisis to longer term sponsored full day care which safeguards children and can prevent the need for the child to enter foster or other forms of care.

The most cost effective solution and an exit strategy is identified at the application stage.

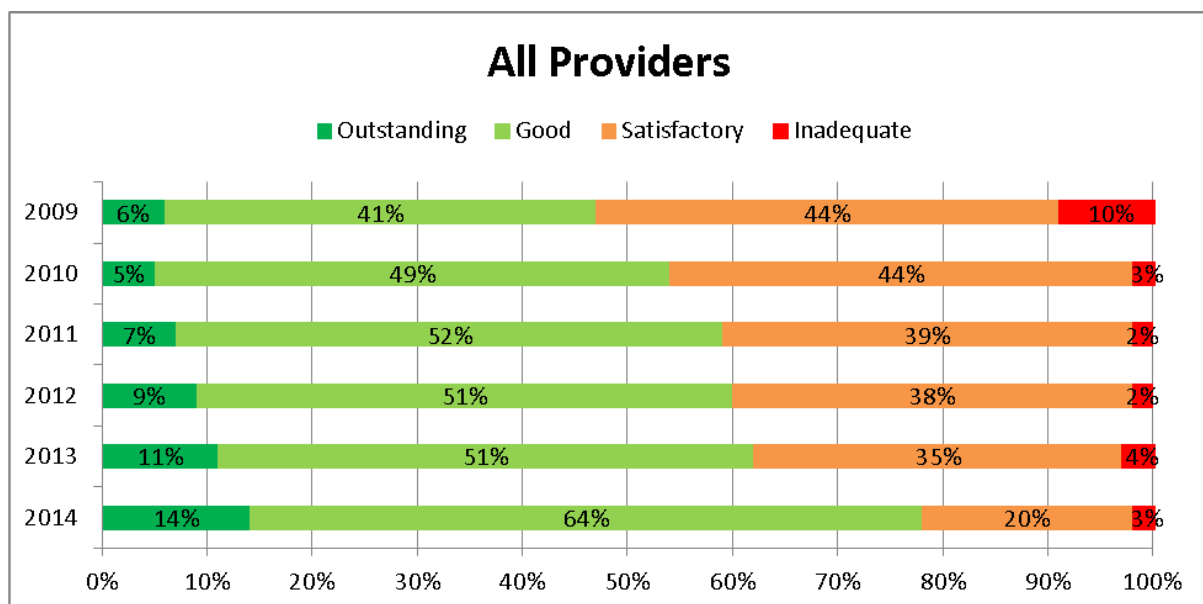
c) Quality

The government has a very clear outcome for all children to be able to take up their entitlement to funded early education in a high quality setting. Ofsted are the sole arbiters of quality and providers are graded as Outstanding/Good/Requires Improvement (previously Satisfactory) or Inadequate.

Providers with an Ofsted grade of Outstanding or Good can offer two, three and four year old funded places. Providers with a Satisfactory/Requires Improvement grade can deliver funded places for three and four year olds but must be working with the local authority to improve the quality of their provision. There is a Quality Improvement process in place and providers who receive a 'requires improvement' or 'inadequate' grade are supported through this process by the Early years Quality Outcomes Team.

Where a provider receives an Inadequate Ofsted grade, funding is removed from the setting as soon as is reasonably possible.

Ofsted inspection grade figures for Bury are shown below.



The above table shows an increase in Outstanding & Good settings from 47% in 2009 to 78% in 2014.

As the following table indicates we currently have a total of 234 registered providers who offer daycare, of these 110 are currently approved to deliver government funded places giving a percentage of 47%.

Sector	No.	EEC	%'age
Childminder	155	40	26
Crèche	7	1	.1
Day Nursery	48	47	98
Nursery Unit of an Academy	2	1	.5
Nursery Unit of an Independent School	3	3	100
Pre-school Playgroup	19	18	95
Total	234	110	47%

We currently have a total of 155 childminders with 40 of these (26%) approved to deliver funded places. We currently have 95 childminders who have a 'Good' or 'Outstanding' Ofsted grade and they alongside new childminders are eligible to deliver places to 2, 3 & 4 year old. We will therefore continue to encourage these childminders to become approved.

Schools

Legislation is currently going through parliament that will allow schools to expand their age range to 2 – 11 year olds. In Bury we have two primary schools who have expressed an interest and will start to deliver two year old places from September 2015.

Sufficiency Tool - MiMo (Minimum Input Maximum Outcomes)

The MIMO sufficiency tool was developed by QA Research , a market leader in Childcare Sufficiency Assessments who produced the 2012 assessment for Bury and is used to help local authorities predict and manage demand for childcare.

The formulas use child populations/projected child populations in conjunction with provider information about places and vacancies/waiting lists in order to provide calculations about where there may be an over or under supply of childcare.

The process also involves gathering and analysing other data including:

- Income/employment trends;
- Provider information including vacancies/waiting lists/hours of opening;
- Quality information – including staffing qualifications and OFSTED ratings;
- Take-up of tax credits.

Different types of data are brought together through the MiMo tool to give a picture of sufficiency and the results are then broken down into 8 'Baskets of Indicators' which are: Sustainability, Flexibility, High Quality, Inclusivity, Affordability, Information/Knowledge, Accessibility and Number of Places.

A traffic light system is then used with a 'Red', 'Amber', 'Green' rating (RAG) given according to their sufficiency score.

5. REPORT CARD – BURY SUFFICIENCY ASSESSMENT

PRIORITY/OUTCOME:

Secure sufficient childcare, as far as is reasonably practicable, to enable parents to work or undertake education or training leading to employment

PROGRESS MEASURE

Bury	OVERALL - Sufficiency Score = 61.5 (73.0)							
	4.8	11.5	4.3	6.4	10	2.5	4	18
	Sustainability (Max - 7.1)	Flexibility (Max - 17.1)	High Quality (Max - 4.3)	Inclusivity (Max - 8.0)	Affordability (Max - 10)	Information/ Knowledge (Max - 2.5)	Accessibility (Max - 4)	Number Of Places (Max - 20)
Bury East = 61.8 (73.0)	3.1	11.5	4.3	6.4	10	2.5	4	20
Bury West = 61.0 (73.0)	3.1	12.7	4.3	6.4	10	2.5	4	18
Prestwich = 58.7 (73.0)	4.8	14.7	4.3	6.4	10	2.5	4	12
Radcliffe = 61.9 (73.0)	4.8	11.5	4.3	6.4	8.4	2.5	4	20
Ramsbottom, Tottington & North Manor = 63.9	4.8	13.9	4.3	6.4	10	2.5	4	18
Whitefield & Unsworth = 57.8 (73.0)	3.1	11.5	4.3	6.4	10	2.5	4	16

WHAT IS THE STORY BEHIND THIS TREND?

Overall there is again very little change in the sufficiency picture for Bury from the previous Childcare Sufficiency Assessment with the outcome still a healthy Green rating.

Due to changes in the availability of data and government guidance, the makeup of the above scores has changed slightly for the CSA this time around which has resulted in different maximum scores in some of the areas and also for the overall score, which now shows 61.5 out of a maximum of 73 against the previous score of 74.2 out of 98.6.

The main area that differs is that of **High Quality**, as Ofsted are now seen by the government as the sole arbiters of quality in childcare, this measure now looks exclusively at Ofsted inspection outcomes and more specifically the number of providers who are judged Good or Outstanding. This measure has improved from Amber to Green.

The **Sustainability** measure has improved from Red to Amber but is still one to monitor. One of the issues this covers is the income that providers receive from government for EEC places not fully covering their costs and this is a national issue. There has been a net change in the number of providers closing in comparison to new ones opening in this period resulting in a small increase in the number of providers.

The areas of **Affordability** (childcare costs, take up of tax credits and weekly wage figures), **Information** (families knowing where to find the right information), **Accessibility** (distance to travel for childcare) and **Number of Places** (vacant childcare places, ratio of places for children aged 0-4 and numbers of providers offering free nursery education places) all remain strong and retain their Green

rating. Although when we drill down to ward level under the Number of Places indicator there is a more varied picture, with some amber ratings and one red so this too remains an area to monitor.

With the help of the Local Authority's Reaching Children and Families Team, increasing numbers of providers are more confident and more capable of providing places for children with additional and sometimes complex needs and this has seen an improvement in the **Inclusivity** measure from Amber in the last CSA to Green.

Finally the Flexibility measure has remained fairly static and remains Amber. This is due mainly to the majority (53%) of childcare providers closing before 6pm although this is balanced in some ways by most providers (83%) opening at 8am or earlier.

WHAT ARE THE CURRENT MAIN INITIATIVES AIMED AT MAINTAINING OR IMPROVING THIS TREND?

The two year old initiative remains a priority and the governments drive to enable schools to widen their age range to two – eleven year olds is influencing how market capacity is increased.

Due to a reconfiguration Bury Children's Centres five sites have now been identified for the development of two year old places. Four of these locations are on school sites and discussions are taking place with the aim of having new places delivered by September 2015

WHICH PARTNERS ARE INVOLVED IN THE MAIN INITIATIVES TO MAINTAIN OR IMPROVE THIS TREND

Childcare providers
Schools
Children's Centres
Sector Support Agencies
Training Providers and others

SUMMARY / ACTION REQUIRED

We will continue to share instances of unmet demand with all childcare providers and encourage them to expand their provision where appropriate.

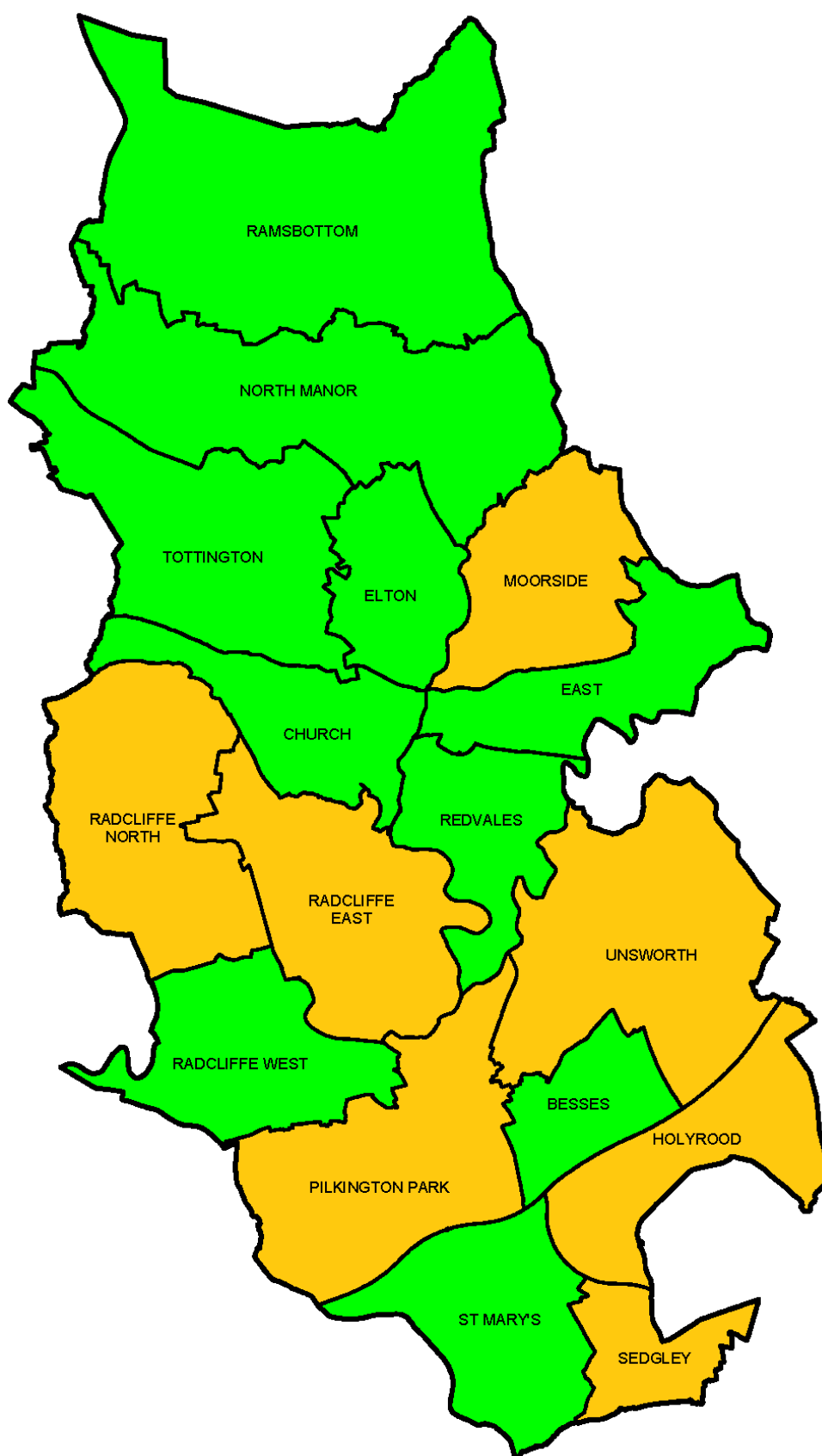
Specific gaps in two year old provision have been identified and plans are in place to develop additional places in Sedgley, Little Oaks and Redvales.

Uptake of two year old places will remain a priority and data will be analysed effectively to enable Children's Centres to follow up and achieve set targets.

Support will continue to be offered to schools and particularly those connected to Children's Centre premises in order to deliver places by September 2015.

Bury	6. OVERALL - Sufficiency Score = 61.5 (73.0)							
	4.8	11.5	4.3	6.4	10	2.5	4	18
	Sustainability (Max - 7.1)	Flexibility (Max - 17.1)	High Quality (Max - 4.3)	Inclusivity (Max - 8.0)	Affordability (Max - 10)	Information/ Knowledge (Max - 2.5)	Accessibility (Max - 4)	Number Of Places (Max - 20)
East = 61.5 (73.0)	4.8	11.5	4.3	6.4	10	2.5	4	18
Moorside = 59.3 (73.0)	1.4	14.7	4.3	6.4	10	2.5	4	16
Redvales = 60.5 (73.0)	1.4	13.9	4.3	6.4	10	2.5	4	18
Church = 64.7 (73.0)	6	11.5	4.3	6.4	10	2.5	4	20
Elton = 63.7 (73.0)	1.4	17.1	4.3	6.4	10	2.5	4	18
Holyrood = 59.3 (73.0)	1.4	14.7	4.3	6.4	10	2.5	4	16
Sedgley = 55.8 (73.0)	4.8	15.5	2.6	6.4	10	2.5	4	10
St Mary's = 64.7 (73.0)	4.8	14.7	4.3	6.4	10	2.5	4	18
Radcliffe East = 59.4 (73.0)	3.1	12.7	4.3	6.4	8.4	2.5	4	18
Radcliffe North = 56.1 (73.0)	1.4	11.5	4.3	6.4	10	2.5	4	16
Radcliffe West = 62.6 (73.0)	3.1	15.9	4.3	6.4	8.4	2.5	4	18
North Manor = 62.7 (73.0)	4.8	14.7	4.3	6.4	10	2.5	4	16
Ramsbottom = 65.9 (73.0)	4.8	13.9	4.3	6.4	10	2.5	4	20
Tottington = 62.4 (73.0)	3.7	15.5	4.3	6.4	10	2.5	4	16
Besses = 61.5 (73.0)	4.8	11.5	4.3	6.4	10	2.5	4	18
Pilkington Park = 50.1 (73.0)	1.4	9.1	4.3	6.4	8.4	2.5	4	14
Unsworth = 52.0 (73.0)	1.4	9.1	2.6	6.4	10	2.5	4	16

7. Ward map of Bury with Sufficiency RAG rating



Any additional information, questions or queries should be emailed to earlyyearsfunding@bury.gov.uk