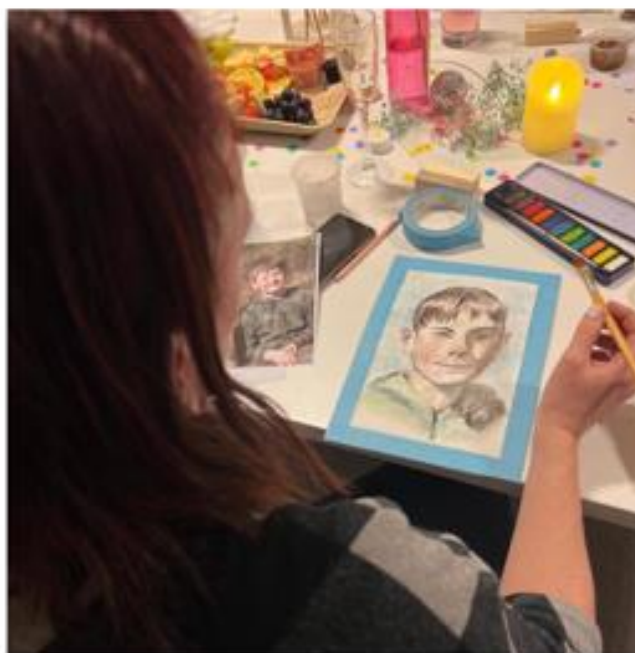


# Bury SEND



# LOCAL OFFER NEWSLETTER

December 2023



BURY2GETHER Parent Carer Wellbeing Session



## What's on in December 2023

**S**PEAK **E**NQUIRE **K**Now **D**ISCUSS 

| Event  | Date     | Time            | Details  |
|--|----------|-----------------|--|
| <b>Graduated Approach Toolkit familiarisation session for parents/carers</b> | 4/12/23  | 7.00pm-8.30pm   | An online familiarisation session for parent carers on the Graduated Approach Toolkit.<br><a href="#">Click here to join the meeting</a>   |
| <b>Local Offer Outreach Drop-in</b>  | 8/12/23  | 10.00am-11.30am | Parent Carer Engagement Officer will be at the Welly Café, Manchester Road Park to signpost you to any support you need.   |
| <b>BURY2GETHER Care and Convo Session</b>                                    | 14/12/23 | 11.00am-12.00pm | A support group for parent carers of children/Young People with SEND. Come along for a Christmas coffee and catchup.<br><b>Venue- Bury SEND Hub, Radcliffe</b>   |
| <b>Children and Young People Mental Health Focus Session</b>                 | 15/12/23 | 10.00am-12.00pm | A focus group discussion to help shape the development of emotional wellbeing services for our children and young people in Bury. Email <a href="mailto:marina.nixon@nhs.net">marina.nixon@nhs.net</a> if you would like to attend.<br><b>Venue- First Point Family, Fishpool Liberal Club, BL9 9HN.</b> |



### SEND Communications and Engagement:

Please **subscribe** to the Local Offer mailing list by:

Email: [SEND.Localoffer@bury.gov.uk](mailto:SEND.Localoffer@bury.gov.uk)

Follow us on Twitter [@BuryLocalOffer](https://twitter.com/BuryLocalOffer)

Facebook: [Bury SEND Local Offer](https://www.facebook.com/BurySENDLocalOffer)

Bury2Gether Parent/Carer Forum:  
[www.bury2gether.co.uk/membership](http://www.bury2gether.co.uk/membership)

Family Information Service:

[Family Information Service \(FIS\) | The Bury Directory](#)



**Got concerns and need to speak to someone about your child's EHCP?**

### SEND Parent/Carer Case Surgery

Online or a Telephone Consultation

Do you have concerns about your child's EHCP or having problems applying for an EHCP for your child? This is an opportunity for you to have a private appointment with Michael Kemp- Strategic Lead for Inclusion and SEND - to talk through your child's plan and discuss any problems you have come across within the SEND system. The one to one appointments will be half hourly, based on a first come first served basis

**The next surgery will be held on:**

**Wednesday 24th January 2024, 1.00pm-3.00pm**

#### FUTURE DATES:

21st February 2024, 1.00pm-3.00pm  
13th March 2024, 1.00pm-3.00pm  
17th April 2024, 1.00pm-3.00pm  
22nd May 2024, 1.00pm-3.00pm  
19th June 2024, 1.00pm-3.00pm  
17th July 2024, 1.00pm-3.00pm  
21st August 2024, 1.00pm-3.00pm  
18th September 2024, 1.00pm-3.00pm  
24th October 2024, 1.00pm-3.00pm  
13th November 2024, 1.00pm-3.00pm  
11th December 2024, 1.00pm-3.00pm

To book an appointment, please contact the Parent Carer Communications and Engagement Officer for an appointment at [Kasia.Taylor@bury.gov.uk](mailto:Kasia.Taylor@bury.gov.uk).

I rang you and felt like I was in a black hole however since speaking to you I actually feel like I can see the light. This meeting has been extremely useful in understanding the terminology used and the resources provided have been really beneficial.

**Bury SENDiass will be arranging further drop in sessions from January 2024. These will be advertised on the Bury SENDiass Facebook page in the next couple of weeks. SENDiass can be contacted any time via telephone (01706 769634) or email ([bury.sendiass@barnardos.org.uk](mailto:bury.sendiass@barnardos.org.uk)). All queries are responded to within 2 days.**

I honestly don't think I would have gotten through the past 2 weeks without the help and support from Katie.

I would just like to take this opportunity of thanking you for everything you have done so far, I wouldn't have had a clue if it wasn't for you and I am super grateful.

**Children and Young People's Emotional Wellbeing Services in Bury**



## Focus Group

**We want to hear from parents and carers...**

Join us for a focus group discussion to help shape the development of emotional wellbeing services for our children and young people in Bury.

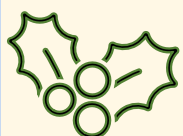
**Friday 15<sup>th</sup> December**  
**10am to 12pm**

at First Point Family,  
Fishpool Liberal Club, Nelson Street, Bury, BL9 9HN.



To register your place  
or for more  
information email :

[marina.nixon@nhs.net](mailto:marina.nixon@nhs.net)







## Vision and Hearing Impairment/Deaf Education Service

Our Youth Group for young people with Vision & Hearing impairments is excited to practise independent travel to their Winter fun activity next month as ten 11-16 year olds venture down to Cathedral Gardens in Manchester for some ice skating fun!

Many activities for Children and Young People with a disability, offer a free carer. Be sure to contact venues directly to see what's available.

Our pre-school group is also getting ready to celebrate the holidays and our event is in the preparation stages. Look out for photos of both events in next month's newsletter.

We wish all of our families and service users a happy and healthy holiday, and look forward to more celebration of our fabulous young people in 2024!

**Lesley Woods**  
**Manager, Vision & Hearing/Deaf Education Service**  
[L.A.Woods@bury.gov.uk](mailto:L.A.Woods@bury.gov.uk)

## EHCPs Monthly Scorecard – 1<sup>st</sup> November 2023

**Bury**  
Council

Current Number of  
Active EHCPs

**2657** ↑

This time last year - 2233

Number of EHCPs Issued  
this year (2023)

**396** ↑

This time last year - 339

Number of Requests for  
Assessment this year (2023)

**593** ↑

This time last year - 488

Number of EHCPs  
Ceased this year (2023)

**98** ↓

This time last year - 150

% requests by Parent/Setting/LA this year

Parent, 39.1%   Setting, 60.5%   LA, 0.2%

% Total requests Agreed/Refused this year

Agreed, 56.6%   Refused, 43.4%

Parental Request Breakdown:

Agreed, 34.6%   Refused, 65.4%

Setting Request Breakdown:

Agreed, 70.3%   Refused, 29.7%

% plans agreed following assessment this year

Agreed, 96.4%

Refused, 3.3%

20 week  
compliance % this  
year so far  
(accumulative)

**71%**

This time last year  
52%  
Full year figure for  
previous year  
50%

**This Month's figures**  
October 23

Number of EHCPs Issued this month

**42** (+9 FROM PREVIOUS MONTH) ↑

20 weeks compliance % this month

**76%** (UP FROM 73% PREVIOUS MONTH) ↑

Number of Requests received this month

**58** (+3 FROM PREVIOUS MONTH) ↑

Number of Plans Ceased this month

**12** (UP 11 FROM PREVIOUS MONTH)

This scorecard is updated Monthly on the 1<sup>st</sup> of each month.

## Friends of the Local Offer

In November, the Friends of the Local Offer, an informal group of parents, carers, services and schools was launched. The group will be a forum for keeping our local conversations alive in respect of the Local Offer, both the website and the offer itself, following on from the co-production events designed for the Local Offer review.

The agenda for the meeting is intentionally simple; to provide progress updates about review of the Local Offer website on a 'You said, we did' basis, and to offer an opportunity for Bury's stakeholders to share their views on all things SEND. Attendees at the November meetings noted the importance of galvanising the Local Offer into action, in terms of use of the website and the development of the Local Offer itself; it was felt that this group would be instrumental in its support to achieve this outcome.

Updates shared at this month's meetings were as follows:

| You said...   | We did...  |
|---|--|
| Service information is not always up to date on the current Local Offer.  | Services have updated their information pages ready for migration to the revised Local Offer.  |
| The current Local Offer is difficult to navigate and there is confusion between the Local Offer and the Bury Directory. | The Local Offer is due to be relocated on a microsite on the Bury Council webpage so that it is a site in its own right.   |
| Service information is difficult to locate.   | Information will be organised into service specific sections, rather than by age group.  |
| There should be a section for families who are new to the SEND arena  | A 'new to SEND' section will be introduced on the home page of the Local Offer   |
| The Local Offer should include video of local families sharing their SEND experience.                                   | 'Welcome' videos led by Local Area staff will appear on each section of the revised Local Offer. A group of Bury SEND experienced families will be creating video clips to share their experience with those families new to SEND. A group of Bury parents/carers will share their experience of using Personal Budgets for Education, Health and Social Care through video diaries. Bury College Supported Internship students will be creating media information for other young people with SEND in response to children and young people's feedback from the co-production events. |

Other SEND issues shared and discussed at the meetings included:

- Arrangements for children and young people with complex needs
- Social Opportunities for adults over 25 with learning disabilities
- Portage and Barnardos agreed to collate a document for the 'New to SEND' section of the revised Local Offer to provide clarification for SEND families about the most common misconceptions with the SEND system
- Access to the Local Offer website in a range of languages
- The role of the SEND Link Governor in challenging school practice for SEND and Inclusion.

Dates for the spring term meetings will be published in the January SEND Newsletter. Any enquiries or comments can be shared via the Local Offer mailbox: [send.localoffer@bury.gov.uk](mailto:send.localoffer@bury.gov.uk)

With many thanks to all Bury's families, schools and services supporting the development of our Local Offer across 2023.



## Annual Review

Believe in  
children  
Barnardo's

There is a requirement for all Education, Health and Care Plans (EHCP) to be reviewed by the local authority (known as the LA) at least annually. This is usually referred to as the Annual Review. In Early Years EHCPs should be reviewed every 3 to 6 months.

The Annual Review is more than just a review meeting, it is a process that **must** be completed on or before the anniversary of when the EHCP was first issued or the anniversary of the last review. It is laid down in law Children and Families Act 2014 Section 44 and in the SEND Code of Practice 2015.

Children moving from **nursery to primary or primary to secondary schools**, there has to be a review. Any amendments **must be amended by 15th February**, of the calendar year your child is due to transfer.

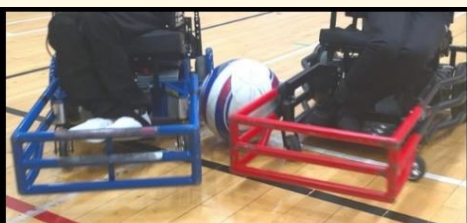
Secondary to post 16 settings, the EHCP must be amended by **15th March** of the calendar year.



**LA must send the final amended EHC plan within a maximum of 12 weeks of the annual review meeting**

### THINGS TO CONSIDER

- The child or young person's aspirations
- The child or young person's progress towards achieving the outcomes specified in their EHCP
- Reviewing the child or young person's needs and provisions
- Whether the placement is still appropriate
- SENDIASS can offer to meet with parents, children or young people before the meeting to help prepare them.



⇒ DO YOU USE A POWERED WHEELCHAIR?

⇒ DO YOU WANT TO PLAY A FAST-PACED GAME OF COMPETITIVE FOOTBALL?



**For further information,  
please contact:**

**[secretary@boltonbullets.co.uk](mailto:secretary@boltonbullets.co.uk)**

**COME AND SEE US**

EVERY FRIDAY

FROM 5PM

AT

SMITHILLS SPORTS CENTRE

SMITHILLS DEAN ROAD

BOLTON

BL1 6JS

**Day or night,  
we're here to help**

Call our 24/7 crisis  
mental health helpline  
**0800 014 9995**

**#FeelWellThisWinter**



# SEND YOUTH CLUB

November 2023

## WHAT WE'VE BEEN UP TO

This month we have seen our junior session grow to be even bigger and we are thrilled to welcome so many new faces. We've had a big birthday bash, hosted many Mario Kart races, and got in the festive spirit with lots of Christmas crafts and a card competition.



At the start of the month our 16+ football team attended their first match at Leyland Football Association. We had a fantastic time and are so excited to go back for the next tournament in February!



[S.STIRLING@BURY.GOV.UK](mailto:S.STIRLING@BURY.GOV.UK)



Oak LP Outreach have delivered four sessions of 'Making Sense of Autism' training to professionals across Bury this half term. This training aims to extend professionals understanding of how autism affects pupils in school and helps to increase their expertise in recognising a pupil's individual strengths and differences.

The training was well received:

***"Fantastic delivery and superb knowledge and understanding around the fascinating topic. I will take away lots from this and cascade it to our staff at school."***



Oak LP Outreach are also working alongside the speech therapy team and the virtual school to deliver the primary Elklan course. To train professionals in Bury schools to support pupils with speech, language and communication difficulties and remove barriers to learning. Keep a look out for the 11-16 course in the spring term.



# Newsletter

Spring Term – 'One For All'



## SENCO Support – Coffee and a Catch Up

Focus – SEN Support

Venue - Elms Bank School, Whitefield

Support from OakLP Outreach, Nicola Pemberton and Laura Baker and LA representative, Cath Atherden.

18<sup>th</sup> January 2024, 3:30-4:30pm, Elms Bank School

## SENCO Solution Meeting

9:00-13:00

Thursday 29<sup>th</sup> February 2024

Venue – Elms Bank College Hub, Prestwich

Agenda

**Transition**

Preparing students with SEND for transition to year 7,  
Transition from children's to adult services\* social care.  
Supporting students with social workers for transition

Plus opportunity to talk with primary and secondary SENCOs to discuss cases

## Support Surgery

Venue – Elms Bank School

Support from  
OakLP Outreach, Elms Bank School, Virtual School, Educational Psychology Service and LA Outreach

Venue - Elms Bank School 9:15-12:15

1<sup>st</sup> February and 14<sup>th</sup> March 2024

8<sup>th</sup> February and 21<sup>st</sup> March 2024



## TA Developmental Drop In

Venue - Elms Bank School/College/Unsworth Primary RP\* Please specify when you book

8:30am – 12:15pm

2<sup>nd</sup> February  
9<sup>th</sup> February

Inclusion is at the heart of our trust





**BROOKHAVEN SCHOOL** — Version 2

# Newsletter



Shaw  
Education  
Trust

*unique by design, awesome by outcome*

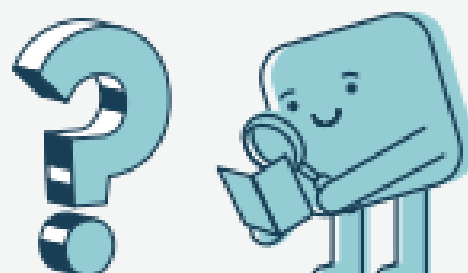


Welcome back to Brookhaven Schools Monthly Newsletter! For this addition we want to talk about how quick time is flying by! It feels like yesterday the first brick was laid! We have come a long way and we are very excited to get in there to inspire, grow and educate new students!

The journey of Brookhaven School started with a vision and a plot of land. Today, it stands! Every beam that has been laid so far has been laid with a vision for the future. We believe that Brookhaven School is not just a building; it will be a cornerstone of the Bury community. It's a place where parents, teachers, and students will come together to create brighter futures. We can't wait to see what the future holds!

## Do You have a burning question?

Looking for Answers to Burning Questions? We've Got You Covered! As a school that values open communication, we're thrilled to introduce our brand-new FAQ page! Our FAQ page is your one-stop destination for clear, concise answers to all your burning questions. We've compiled a comprehensive list of queries that we have been frequently asked, so you can find the information you need quickly and easily!



Our goal is to make your experience with our school as seamless as possible. So, if you have a question, chances are, you'll find the answer right here! Have a question not covered? Don't hesitate to reach out – we're always here to assist you. ✨

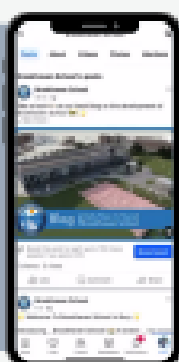


**Take a look at our new FAQs page:**

[www.brookhavenschool.org.uk/faqs](http://www.brookhavenschool.org.uk/faqs)



## Follow us on Facebook!

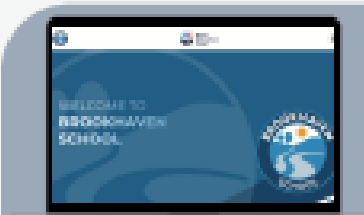


Follow the Brookhaven Facebook page for behind-the-scenes glimpses, sneak peeks, and all the latest news about Brookhaven School!



@Brookhaven.School.Bury

## Check Out Our Website!



Looking for an answer to a question about Brookhaven School?

[www.brookhavenschool.org.uk](http://www.brookhavenschool.org.uk)





The first of BURY2GETHER's parent/carer well-being sessions was a huge success. Thanks to our dedicated volunteers for facilitating this.

We are also very grateful for the support of the Asda Foundation, whose 'Empowering Local Communities' grant has subsidised these events and GG Bakes who are providing refreshments.

To book on a future session, click here:

<https://forms.gle/VtZJi2wKj7hBZtzK8...>

We can't wait for the next one!



## CARE & CONVO

Supporting Parents/Carers who have a Child/Young Person with a Special Educational Need and/or a Disability (SEND), aged 0-25, who access Bury services.

Are you a Parent/Carer?

Fancy a brew and an offload to other parent/carers? We are here to listen. (Children/Young People welcome).

Next date: Thurs 14th December 11.00am - 12.00pm

During this session, our parent/carer wellbeing library will be open! This is the opportunity for our members to borrow wellbeing resources and equipment to use at home.



Our printing station will be set up. The sensory room will be open and parent/carers can help themselves to 'invisible disability' lanyards.



Please let us know you are coming by booking your place at the email address below:  
BURY2GETHER@gmail.com  
www.bury2gether.co.uk

The Bury SEND Hub (Home of BURY2GETHER)  
Westminster Avenue  
Radcliffe  
Greater Manchester  
M26 3WD

@BURY2GETHER

### Parent/Carer Wellbeing Workshops

BURY2GETHER are pleased to introduce a new series of wellbeing events for our Parent/Carer members. We have two different wellbeing sessions on offer across 4 dates. We are very grateful for the support of ASDA Foundation, whose 'Empowering Local Communities' grant has subsidised these events.

#### Create & Escape

Join us for a relaxing evening art session, where you will be guided to create a beautiful piece of art work. Meet other parent/carers within the community, get creative whilst enjoying some lovely nibbles and drinks

Friday 17th November  
6:00pm - 8:00pm

Friday 12th January  
6:00pm - 8:00pm

#### Self Care Saturdays

Subsidised Tickets Cost **£3**

Join us for a relaxing but informative session on self care. This session is an informal interactive workshop where you will be guided through activities to support and improve your overall wellbeing alongside some lovely nibbles and drinks.

Saturday 2nd December  
11:00am - 1:00pm

Saturday 27th January  
11:00am - 1:00pm

### BOOK NOW

Email [bury2gether@gmail.com](mailto:bury2gether@gmail.com)

Attendees will also have access to our Wellbeing Library

To be eligible for a place, you must be a member of BURY2GETHER. Membership forms can be completed at [bury2gether.co.uk/membership](http://bury2gether.co.uk/membership)

The sessions will be held at: Bury SEND Hub (Home of BURY2GETHER), Westminster Avenue, Radcliffe, M26 3WD



Sunday 10th December

4pm - 6pm

## SEND SANTA SPECIAL @ SECRET GARDEN- HOYLES PARK

£15 per Child

- 🌲 Santa Visit 🌲 Gift 🌲 Craft 🌲 Campfire 🌲
- 🌲 Marshmallow Toasting 🌲 Refreshments 🌲
- 🌲 Forest School & Sensory Garden experience 🌲

## WINTER WONDERLAND AT SECRET GARDEN - HOYLES PARK

Enjoy our Forest School & Sensory Garden Winter Wonderland experience!

SUNDAY  
10TH DECEMBER

6.30-8.00PM



Tickets - £10 per child

TICKET INCLUDES: EXCLUSIVE SITE USAGE, CRAFT, THE SANTACEPTOR VISIT & A GIFT, FIRE STARTING, CAMPFIRE & MARSHMALLOW TOASTING!

ADDITIONAL ITEMS AVAILABLE FROM OUR LITTLE SECRET GARDEN CHRISTMAS MARKET  
REFRESHMENTS, CHRISTMAS DRINKS, SWEETS, POPCORN, COOKIES & CAKES!

## BEE INCLUSIVE'S WINTER

### HOLIDAY ACTIVITIES

#### Boomerang - Lunch with Santa

Multi-sensory playcentre session for children with SEND including complex care, PMLD and wheelchair users. Buffet lunch, hot chocolate and meet Santa!

Sunday 3rd December  
1.00pm-2.30pm

#### KidsRock

Music and Movement session for children with SEND including complex care needs, PMLD and wheelchair users. Reception class upwards

Thursday 28th December  
1.00pm-2.00pm

#### Jump Xtreme & That Fun Place

Trampoline park and play centre for children primary and secondary school aged who have SEND.

Thursday 28th December  
5.00pm-7.00pm

#### Imagination Bay Adventure Play

This activity is for Early Years children. Soft Play, Imagination play and an indoor sand area.

Tuesday 2nd January  
11.15am - 1.15pm

#### Bury Arcade Club

Two hours exclusive use of retro and modern arcade games for children primary and secondary school age who have SEND

Tuesday 2nd January  
2.00pm - 4.00pm

Subsidised tickets for SEND and all activities are Bee Inclusive exclusive events.



FOR FULL DETAILS, ELIGIBILITY AND TO BOOK VISIT  
[HTTPS://BOOKWHEN.COM/BEEINCLUSIVE?TAGS=SCHOOLHOLIDAYS](https://bookwhen.com/BEEINCLUSIVE?TAGS=SCHOOLHOLIDAYS)

## SECRET GARDEN HOYLES PARK

AGES 6+

## Winter HOLIDAY Club

28TH DEC & 5TH JAN  
10:00-2:00PM £24

SEND ONLY DATES:

29TH DEC & 4TH JAN  
10-12PM & 12-2PM  
£12 PER 2 HOUR SLOT

HAF FUNDED SPACES AVAILABLE



HOT FOOD INCLUDED  
CONTACT TO BOOK







## WHAT'S ON AT BURY SEND HUB

**MON 4 DEC**  
9:15 AM - 11:15 AM  
FREE MOVING, HANDLING AND BACKCARE SESSION FOR PARENT/CARERS PROVIDED BY NUANCE. TO BOOK EMAIL BURY2GETHER@GMAIL.COM

**WED 6 DEC**  
11:00 AM - 1:00 PM  
SEND EARLY YEARS (0-5 YEARS) STAY & PLAY/CARE & CONVO WITH SEND HEALTH VISITOR AND SENIOR PORTAGE WORKER. BOOKING ESSENTIAL AT BOOKWHEN.COM/BEEINCLUSIVE

**WED 6 DEC**  
4:30 PM - 5:30 PM  
HAPPY SIGNS CHOIR: A SINGING AND SIGNING CHOIR FOR PEOPLE WITH SEND AND THEIR FAMILIES. FOR MORE INFORMATION/TO BOOK PLEASE CONTACT EMMA: HAPPYSIGNSCIC@YAHOO.COM

**SAT 9 DEC**  
10:00 AM - 5:00 PM  
HAIRCUTS AT THE SEND HUB. BOOK A SLOT AT: WWW.BOOKWHEN.COM/BEEINCLUSIVE

**WED 13 DEC**  
10:00 AM - 12:00 PM  
SENDIASS WORKSHOP FOR PARENT/CARERS: TRANSPORT BOOKING ESSENTIAL AT: [HTTPS://WWW.EVENTBRITE.CO.UK/E-BURY-SENDIASS-SEN-SUPPORT-WORKSHOP-TICKETS-685490910767?aff=EBDSSEDESTSEARCH](https://www.eventbrite.co.uk/e/bury-sendiass-sen-support-workshop-tickets-685490910767?aff=EBDSSEDESTSEARCH)

**THU 14 DEC**  
11:00 AM - 12:00 PM  
BURY2GETHER CARE AND CONVO. OPEN TO ALL PARENT/CARERS. CHILDREN ARE WELCOME TO ATTEND. BOOKING ESSENTIAL: BURY2GETHER@GMAIL.COM

**SAT 16 DEC**  
11:00 AM - 12:00 PM  
KIDSRock MUSIC 4 GENERATIONS SEND MUSIC SESSION. JOIN CHRIS AND AH YEE FOR A FUN, INTERACTIVE MUSIC SESSION. FOR MORE INFORMATION AND TO BOOK: EMAIL - KIDSRockWITHCHRIS@HOTMAIL.CO.UK TELEPHONE - 07855 733308

**WED 20 DEC**  
11:00 AM - 1:00 PM  
SEND EARLY YEARS (0-5 YEARS) STAY & PLAY/CARE & CONVO WITH SEND HEALTH VISITOR AND SENIOR PORTAGE WORKER. BOOKING ESSENTIAL AT BOOKWHEN.COM/BEEINCLUSIVE

**WED 20 DEC**  
4:30 PM - 5:30 PM  
HAPPY SIGNS CHOIR: A SINGING AND SIGNING CHOIR FOR PEOPLE WITH SEND AND THEIR FAMILIES. FOR MORE INFORMATION/TO BOOK PLEASE CONTACT EMMA: HAPPYSIGNSCIC@YAHOO.COM

**THU 28 DEC**  
1:00 PM - 2:00 PM  
KIDSRock SEND FUN, INTERACTIVE MUSIC SESSION. FOR MORE INFORMATION AND TO BOOK, VISIT BOOKWHEN.COM/BEEINCLUSIVE

**BEE INCLUSIVE PARTIES**  
EXCLUSIVE USE OF OUR VENUE FOR TWO HOURS FOR 15-20 CHILDREN INCLUDING ACCESS TO THE COURTYARD, PLAYGROUND AND SENSORY ROOM. FULL ACCESS TO OUR KITCHEN. PARTY INVITES AND ACCESSORIES AVAILABLE TOO.  
VISIT [WWW.BEEINCLUSIVE.CO.UK](http://WWW.BEEINCLUSIVE.CO.UK) FOR FURTHER DETAILS.  
OR TO BOOK A PARTY, EMAIL US AT [BOOKBEEINCLUSIVE@GMAIL.COM](mailto:BOOKBEEINCLUSIVE@GMAIL.COM).

**BEE INCLUSIVE SENSORY ROOM**  
AVAILABLE FOR HIRE TO BURY SEND FAMILIES AND ORGANISATIONS. TO BOOK A SESSION, VISIT [WWW.BOOKWHEN.COM/BEEINCLUSIVE](http://WWW.BOOKWHEN.COM/BEEINCLUSIVE) OR VISIT [WWW.BEEINCLUSIVE.CO.UK/SENSORY-ROOM](http://WWW.BEEINCLUSIVE.CO.UK/SENSORY-ROOM) FOR FURTHER DETAILS

**BURY2GETHER WELLBEING LIBRARY**  
A RANGE OF BOOKS AND WELLBEING EQUIPMENT FOR HIRE. BOOK BY APPOINTMENT BY EMAIL TO [BURY2GETHER@GMAIL.COM](mailto:BURY2GETHER@GMAIL.COM)



## SEND Early Years (age 0-5) Sessions 2 hour Stay & Play

**UPCOMING SESSIONS:**  
Wednesday 6th December 2023  
Wednesday 20th December 2023  
Time: 11:00am - 1:00pm

Bee Inclusive is hosting the above Early Years sessions for children with Special Educational Needs and Disabilities (SEND) aged 0-5 years and their parent/carers. The sessions will be filled with lots of fun and educational activities.

These sessions are facilitated by Kelly Judd (Senior Portage Worker) and Laura Trevor (SEND Health Visitor) with support from other professionals and volunteers who will be available for advice and support. Refreshments will be available, and the Sensory Room and sensory courtyard will be open for use. A parent/carer must stay and supervise their child at all times.

To be considered for a place, you must meet the following criteria:

- Is your child 0-5 years old?
- Does your child live in (or access) services in Bury?
- Do any of the following apply? 1) Does your child have a diagnosis of SEND? 2) Do you or professionals suspect that your child has SEND? 3) Is your child on the pathway for a SEND diagnosis?

\*Please note: In order to allocate places on these sessions, professionals will prioritise children who are not in an early years setting, who are not currently accessing early years services, children who cannot access generic early help sessions, and those who haven't attended our sessions before.\*

Visit [www.bookwhen.co.uk/beeinclusive](http://www.bookwhen.co.uk/beeinclusive) to request a place at these sessions. You will be contacted by Bee Inclusive if your family have been allocated a place.

**BURY SEND HUB**  
Westminster Avenue  
Radcliffe M26 3WD

**bee\_inclusive**  
@beeinclusiveuk

Bee Inclusive CIC is a 'not-for-profit', Community Interest Company - 1284282. We provide social opportunities for children and young people with SEND, (Special Educational Needs and Disabilities).

**CARTMAN & ROSS SOLICITORS**  
**AtUr Services**  
**CAHN**  
Caribbean & African Health Network

## Legal Drop-in Sessions

Join us online for our legal drop-in session, occurring every other month (4<sup>th</sup> Thursday of the month).

Time: 6pm to 7pm / Where: Zoom session

We will be supporting the community by providing brief information and a short Q&A on a variety of legal issues including completion of legal aid forms and options for required support.

Call our confidential helpline on 07710 022 382

For more information on how to join the session, email us on [advocacy@cahn.org.uk](mailto:advocacy@cahn.org.uk)

To hear more about what we do, please access our website on <https://www.cahn.org.uk> #weCAHNhelp

Follow us on [@cahnuk](https://www.facebook.com/cahnuk) [@cahnuk](https://www.instagram.com/cahnuk) [@cahnuk](https://www.linkedin.com/company/cahnuk) [@cahnuk](https://www.youtube.com/channel/UCaHnUK) [@cahnuk](https://www.tiktok.com/@cahnuk)

**CAHN**  
Caribbean & African Health Network

**Home Office**

## CAHN and Home Office Drop-in Sessions

Join us online for our immigration drop-in session, occurring every other month.

Time: 1pm to 4pm  
Where: Zoom session

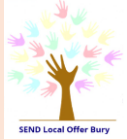
We will be supporting the community with a variety of issues relating to Immigration and the Civil Service.

Call our confidential helpline on 07710 022 382  
For more information on how to join the session, email us on [advocacy@cahn.org.uk](mailto:advocacy@cahn.org.uk)

The Home Office assures there will be no enforcement activity during the drop-in

To hear more about what we do, please access our website on <https://www.cahn.org.uk> #weCAHNhelp

Follow us on [@cahnuk](https://www.facebook.com/cahnuk) [@cahnuk](https://www.instagram.com/cahnuk) [@cahnuk](https://www.linkedin.com/company/cahnuk) [@cahnuk](https://www.youtube.com/channel/UCaHnUK) [@cahnuk](https://www.tiktok.com/@cahnuk)



## SEND Local Offer Key Contacts

|                                      |   |                                       |  |
|--------------------------------------|---|---------------------------------------|--|
| Portage                              | 0161 253 7609   | K.A.Judd@bury.gov.uk                  | <a href="#">Bury Portage Home Teaching Team   National Portage Association</a>   |
| Family Information Service           | 0161 253 5941   | childinfo@bury.gov.uk                 | <a href="#">Family Information Service (FIS)   The Bury Directory</a>  |
| Early Years                          | 0161 253 6066   | J.Ash@bury.gov.uk                     | <a href="#">Early Years Special Educational Needs &amp; Disability (SEND) Information   The Bury Directory</a>   |
| EHCP Team                            | 0161 253 5969   | EHC@bury.gov.uk                       | <a href="#">Education, Health, Care Assessments and Plans - Bury Council</a>   |
| Early Help                           | 0161 253 5200   | EarlyHelp@bury.gov.uk                 | <a href="#">Early Help - Bury Council</a>  |
| Children with Disabilities Team      | 0161 253 6070   | CWD@bury.gov.uk                       | <a href="#">Children with disabilities - Bury Council</a>  |
| SEND Support Team                    | 07976 682398  | c.atherden@bury.gov.uk                | <a href="#">SEND Support Service   The Bury Directory</a>  |
| Education Psychologists              | 0161 253 6406   | edpsych@bury.gov.uk                   | <a href="#">Educational Psychology Service   The Bury Directory</a>  |
| VI/HI impairment Team                | 0161 253 7159   | L.A.Woods@bury.gov.uk                 | <a href="#">Vision and Hearing Impairment/Deaf Education Service - Hearing Impairment   The Bury Directory</a>   |
| Transport                            | 0161 253 6968   | SchoolAndCollegeTransport@bury.gov.uk | <a href="#">School and college travel assistance - Bury Council</a>  |
| School Admissions Team               | 0161 253 6474   | admissions@bury.gov.uk                | <a href="http://www.bury.gov.uk/schools-and-learning/school-admissions">www.bury.gov.uk/schools-and-learning/school-admissions</a>                             |
| Connexions                           | 0161 253 7733   | Connexions@bury.gov.uk                | <a href="http://www.bury.gov.uk/Connexions">www.bury.gov.uk/Connexions</a>   |
| SEND Youth Service                   | 0161 253 6122   | S.Stirling@bury.gov.uk                | -  |
| Bury Employment Support and Training | 0161 761 4662   | thewellycafe@gmail.com                | <a href="http://www.bury.gov.uk/jobs-and-skills/bury-employment-support-and-training">www.bury.gov.uk/jobs-and-skills/bury-employment-support-and-training</a> |
| Persona/Escape                       | 0161 253 5100   | info@personasupport.org               | <a href="http://www.personasupport.org/our-services/escape/">www.personasupport.org/our-services/escape/</a>   |
| SENDiass                             | 01706 769 634   | bury.sendiass@barnardos.org.uk        | <a href="http://www.barnardossendiass.org.uk/bury-sendiass">www.barnardossendiass.org.uk/bury-sendiass</a>   |
| School Nursing Team                  | Schools in Radcliffe: 0161 724 2086                             |                                       | <a href="http://www.northerncarealliance.nhs.uk/our-services/school-nursing-1">www.northerncarealliance.nhs.uk/our-services/school-nursing-1</a>               |
|                                      | Schools in Whitefield or Unsworth: 0161 798 2160                |                                       |  |
|                                      | Schools in Ramsbottom, Tottington or North Manor: 01706 283 506 |                                       |  |
|                                      | Schools in Prestwich: 0161 798 2160                             |                                       |  |
|                                      | Schools in Bury central: 0161 762 3291 (option 5)               |                                       |  |

|  |  |  |   |
|--|--|--|---|
| <b>School Immunisation Team</b>                  | 0161 724 2132  |  | <u><a href="#">School Immunisation Team- Bury Community</a></u>   |
| <b>Paediatric Physiotherapy Team</b>             | 0161 2060657   | burypaedphysio@nca.nhs.uk                  | <u><a href="#">Paediatric Physiotherapy - Bury Community</a></u>  |
| <b>Occupational Therapy Team</b>                 | 0161 206 0668/0161 206 0667  |  |   |
| <b>Health Visitor</b>                            | Radcliffe Health Visiting Team - 0161 724 2086 Opt 1                         |  | -   |
|  | Ramsbottom, Tottington and North Manor Health Visiting Team - 01706 282 933. |  | -   |
|  | Bury Town Centre Health Visiting Team - 0161 762 3291 (select option 3)      |  | -   |
|  | Prestwich Health Visiting Team - 0161 798 2721                               |  | -   |
|  | Whitefield Health Visiting Team - 0161 762 3748                              |  | -   |
|  | Chatsworth House, Little 66, Roach Bank Rd, Bury BL9 8RN                     |  | -   |
| <b>CAMHS</b>                                     | 0161 716 1100 / 1112   |  | <u><a href="http://www.penninecare.nhs.uk/burycamhs">www.penninecare.nhs.uk/burycamhs</a></u>                                       |
| <b>Speech and Language Team</b>                  | 0161 724 2092/01617161505  |  | <u><a href="#">Paediatric Speech and Language Therapy :: Northern Care Alliance</a></u>   |
| <b>Community Paediatrics</b>                     | 01706 906 726 (Booking and Scheduling)                                       |  | <u><a href="#">Community Paediatrics and Child Health :: Northern Care Alliance</a></u>   |
| <b>SEND Designated Clinical Officer</b>          | 07929 865159   | joanne.mcmaster2@nhs.net                   |   |
| <b>Orthoptist - Community Eye Team</b>           | 0161 762 1692  | SPOA.fax@nca.nhs.uk                        | <u><a href="#">Eye Service :: Northern Care Alliance</a></u>  |
| <b>Audiology</b>                                 | 01706 674 913/Children's hearing aid service 0161 778 3033                   | NESaudiology@nca.nhs.uk                    | <u><a href="#">Audiology :: Northern Care Alliance</a></u>  |
| <b>Virtual Schools</b>                           |  | J.Foster@bury.gov.uk                       | <u><a href="http://www.bury.gov.uk/schools-and-learning/virtual-school">www.bury.gov.uk/schools-and-learning/virtual-school</a></u> |
| <b>Young People's Mental Health Support Team</b> |  | pcn-tr.burymhst@nhs.net                    | <u><a href="http://www.penninecare.nhs.uk/burymhst">www.penninecare.nhs.uk/burymhst</a></u>   |
| <b>Children's Learning Disability Team, Bury</b> | 0161 762 3263  | pcn-tr.burychildrenldteamreferrals@nhs.net | <u><a href="http://www.penninecare.nhs.uk/burychildrensld">www.penninecare.nhs.uk/burychildrensld</a></u>                           |