

Why mark dentures with ID?

- Losing a denture can be distressing for clients
- It can be very distressing for clients and families
- It affects their dignity and ability to smile
- It affects their ability to eat and drink, enjoyment of food.
- Many vulnerable older people are not able to adapt to new dentures.
- It takes several weeks to get replacement dentures made with several fittings at a cost to the client.
- It is easily avoided.

Denture Sunflower



- The denture sunflower sticker is to help staff identify clients who wear a denture and the sunflower should be made visible near them.
- If you see the sunflower clients may need help with denture care.
- Please encourage clients to remove their denture at night, clean it and place in a labelled denture pot with clean water
- Check pillows and sheets before stripping the beds
- People sometimes put dentures in tissues.
- Check for dentures when clearing up after meals.

Lost Dentures

- Check bedding, bins and anywhere debris may have been cleared to.
- The denture sunflower sticker helps staff identify clients who wear a denture and the sunflower should be made visible near them.
- If you see the sunflower clients may need help with denture care.
- Please encourage clients to remove their denture at night, clean it and place in a labelled denture pot with clean water
- Check pillows and sheets before stripping the beds
- People sometimes put dentures in tissues. Check for dentures when clearing up after meals.

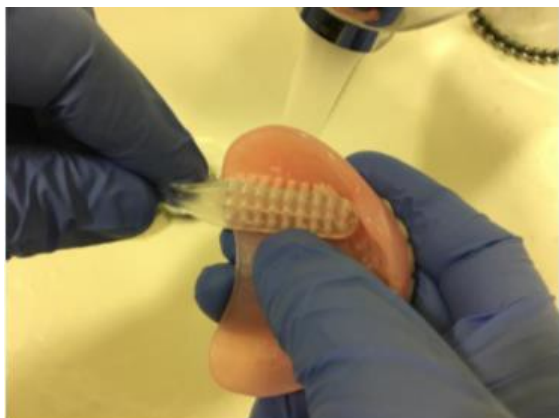
Greater Manchester

Denture ID Guidance



Why and how to ID a denture & avoid lost dentures

How to mark a denture with clients ID



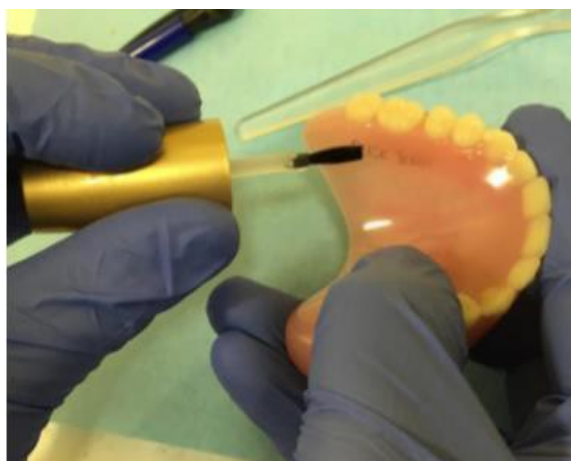
- 1 Remove dentures from the person's mouth and clean in soapy water with nail brush or denture brush over a sink filled with water.
- 2 Disinfect the dentures by soaking for 30 minutes in a dilute Milton solution or if it is a metal denture use a Dentural cleaning solution. Dry the denture.



- 3 Choose an area at the back of the denture where it won't be seen when the client smiles. On the polished surface, use the pan scrub to roughen the area for marking.



- 4 Use an indelible pen or pencil to write residents name or initials and date of birth. Wait to dry.



- 5 Apply fine layer of clear nail varnish & allow to dry.
- 6 Rinse with water and replace in the resident's mouth.

**This process takes about 10 minutes once the denture is cleaned
and can be carried out by a carer**