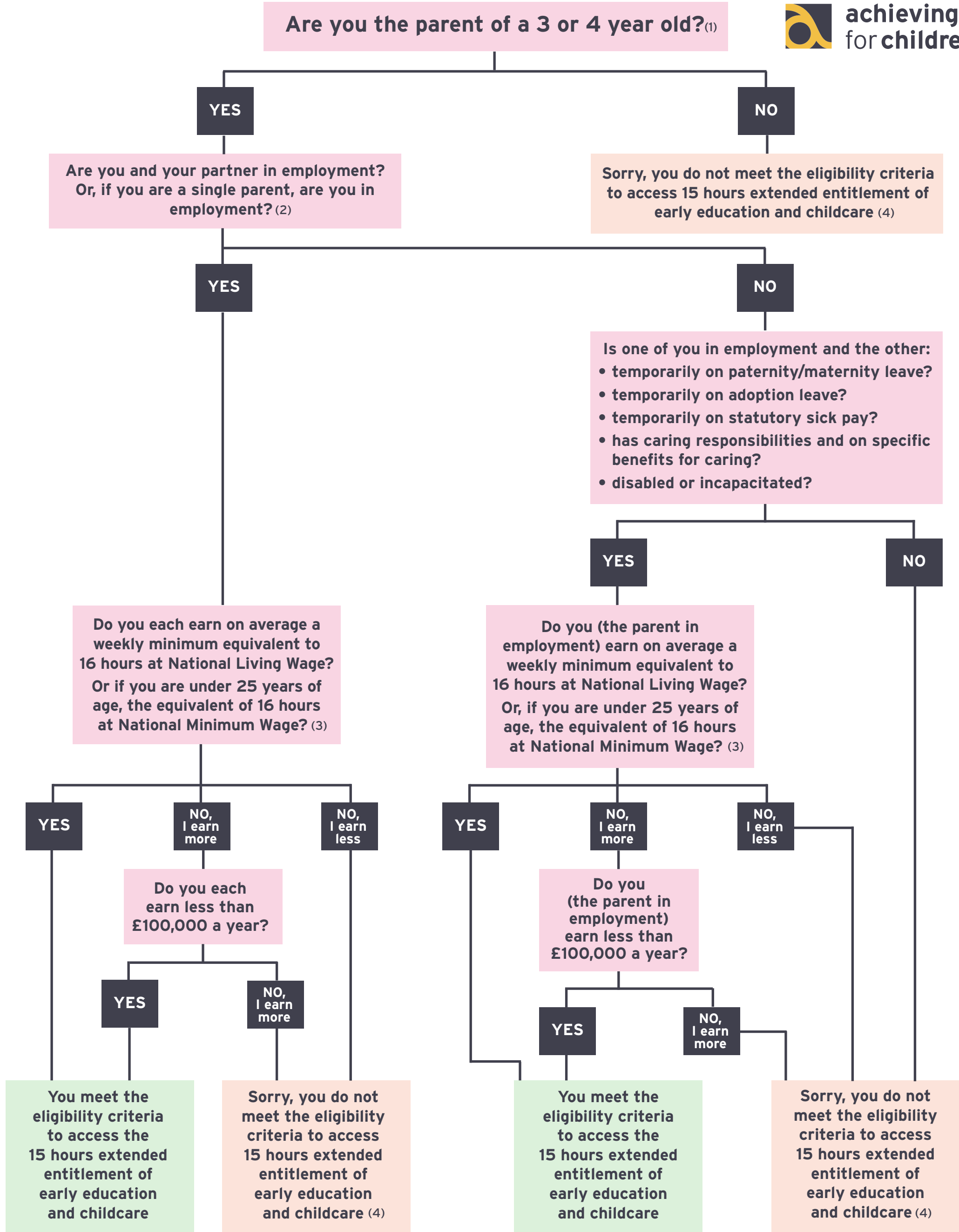


Parent eligibility flow chart for extended 15 hour entitlement



(1) Please refer to the FAQs to check when your child, based on birth date, can start to receive the extended entitlement.

(2) Self-employed parents and parents on zero-hour contracts will be eligible if they meet the average earnings criteria.

(3) You do not need to actually work 16 hours a week, but your earnings must equal at least 16 hours work at minimum or national living wage. This currently equates to a minimum income requirement for a parent or carer over 25 years of £115.20 a week, for 21 to 24 year olds £111.20 a week, 18 to 20 year olds £88.80 a week or under-18s, £64 a week.

(4) There are ways that you can get into employment or increase your working hours that can make you eligible for the extended entitlement of early education and childcare. Visit the Jobcentre Plus or your Citizen's Advice Bureau.