

Early Years Provider Newsletter

Edition 8 2020

Introduction

Welcome to the 8th edition of the Early Years E –bulletin, the last one of 2020

- Covid - 19
- Early Years Funding
- Early Years Foundation Stage
- Safeguarding
- Send & Inclusion
- Bereavement model policy for early years settings updated
- Training/information

From all the early years team can I say a huge thank you to you all for your resilience and professionalism through what has been such a difficult year

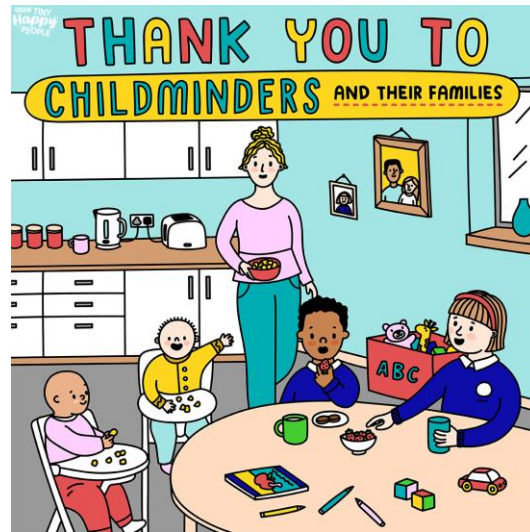
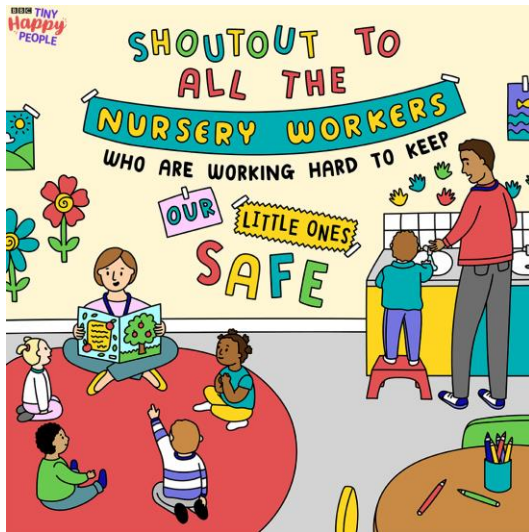
The words "Thank you" are written in a large, blue, 3D-style font with a white outline and a slight shadow effect, giving it a pop-out appearance.

From all the team we would like to wish you all a very

A festive graphic featuring a silhouette of Santa Claus in his sleigh, pulled by three reindeer, flying through a trail of white snowflakes. Below the illustration, the words "MERRY" and "CHRISTMAS" are written in large, bold, block letters. "MERRY" is in red and "CHRISTMAS" is in green.

Covid – 19

Childminders and Early Years Workers are still open during this second lockdown 🐼 We wanted to take a minute to say THANK YOU



<https://www.instagram.com/bbctinyhappypeople/>

As always can we take this opportunity to thank you for the information and updates you have provided so far and continue to provide, it's extremely helpful and very much appreciated.

If you receive a request from parents that you are unable to meet, please would you refer them to the Family Information Service where we can support them finding alternative provision in their local area.

Family Information Service and Bury Directory Officer

Email: childinfo@bury.gov.uk

Phone: 0161 253 7956

Bury is a high risk area - Together we can get the spread of coronavirus under control.

Information in respect of local data and arrangements can be found at:

www.bury.gov.uk/coronavirus-data

[The simple things we must all do to keep infections down](#)

- [Follow the local COVID alert restrictions](#)
- [Get a test if you have symptoms](#)
- [Keep informed - subscribe to our regular email updates](#)
- [Actions for early years and childcare providers during the coronavirus outbreak](#)

Tell Ofsted if you have a covid-19 incident at your childcare Business

Ofsted have [published guidance](#) regarding informing all early years provision to contact them if there has been a confirmed case of Covid in their setting. Settings should also contact them if they have had to close due to this.

<https://www.gov.uk/guidance/tell-ofsted-if-you-have-a-covid-19-incident-at-your-childcare-business>

The DFE have updated their guidance to reflect the end of National Restrictions

[early years providers](#) and [special schools and other specialist settings](#) should operate under the local restriction tiers. There are no substantive changes for settings to act on.

Department for Education guidance

Our guidance to support education providers, local authorities and parents during the coronavirus (COVID-19) outbreak can be accessed using the links below:

- [Guidance for early years and childcare providers](#)
- [Guidance for holiday or after-school clubs and other out-of-school settings](#)

Festive break – advice for early years providers

We know that many nurseries and childminders will continue to operate over the holiday period, providing invaluable support to parents who still require childcare during this time. Private, voluntary and independent providers, and maintained nursery schools can continue to open during the period and should continue to follow the guidance for early years and childcare providers during the coronavirus

(COVID-19) outbreak. School-based nurseries that only open during term-time should follow the arrangements for their school.

Department for Education coronavirus (COVID-19) helpline – holiday hours

The Department for Education coronavirus (COVID-19) helpline and the PHE Advice Service (option 1) will be available over the holidays to answer any questions you have about coronavirus (COVID-19) relating to education settings and children's social care. These helplines will, however, close on the bank holidays, and have shortened opening hours on Christmas Eve and New Year's Eve.

Phone: 0800 046 8687

Opening hours:

24 December – 8am to 4pm

25 to 28 December – Closed

29 to 30 December – 8am to 6pm

31 December – 9am to 4pm

1 January – Closed

2 to 3 January – 10am to 6pm

During the times when the DFe helpline is closed you can call the **NHS 111** and then report the case when the DF lines reopen

PHE have updated COVID-19 action cards

[You can access the action cards via the COVID-19 resource centre, here.](#)

Testing centres will continue to operate as normal during lockdown. Bury is working hard to ensure that everyone in Bury who needs a test for COVID-19, gets one. Please only request a test if you have symptoms - a high temperature, a new continuous cough, or a loss or change to sense of smell or taste. Get tested within the first 3-5 days of symptoms. Full list of testing options:

- Walk-through testing centres (no appointment needed) at the Mosses Centre and Chesham Fold (open 10am-3pm, Mon-Fri)
- Drive-through testing (by appointment) at Waterfold Business Park
- Department for Health & Social Care testing centres (by appointment):
 - o The former Radcliffe Pool car park, Blackburn Street (open 8am-8pm, Mon-Sun)
 - o Whitefield Library, Pinfold Lane, Whitefield (open 8am-8pm, Mon-Sun)
 - o The Metro Christian Centre, 13 Parkhills Road (8am-8pm Mon-Sat)
 - o Longfield Centre car park (via Rectory Lane), Prestwich (open 8am-8pm, Mon-Sun)
- Tests at regional sites/home test kits are also available.

How to book With the exception of our walk-through testing centres where no appointment is needed; people requesting a test need to book an appointment in advance. The way you book an appointment varies by location as the testing sites are run in different ways by different providers. You can find all the information you need on booking and testing generally in one place: <https://www.bury.gov.uk/coronavirus-testing> or call 0161 253 5515.

COVID test sites

Red indicates a change in usual arrangements

	Test Centre opening hours							
Date	Waterfold drive through	Bury East - Moses Centre	Moorside - Chesham Fold	Redvales - Metro Centre	Radcliffe - Old Baths Car Park	Besses - Whitefield Library	St Mary's - Longfield car park	Ramsbottom - Great Eaves Road
Thursday 24th December	11:00 - 17:00	10:00 - 15:00		08:00-20:00				
Friday 25th December	Closed		09:00-15:00					
Saturday 26th December	Closed		08:00-20:00					
Sunday 27th December	Closed		08:00-20:00					
Monday 28th December	Closed		09:00-15:00					
Tuesday 29th December	11:00 - 17:00	10:00 - 15:00		08:00-20:00				
Wednesday 30th December	11:00 - 17:00	10:00 - 15:00		08:00-20:00				
Thursday 31st December	11:00 - 17:00	10:00 - 15:00		08:00-20:00				
Friday 1st January	Closed		09:00-15:00					
Saturday 2nd January	Closed		08:00-20:00					
Sunday 3rd January	Closed		08:00-20:00					
Monday 4th January	11:00 - 17:00	10:00 - 15:00		08:00-20:00				

Infection prevention and control

Essential infection control and health protection advice will be available throughout the Christmas period. Where the Council infection control team is not operating, PHE North West's health protection team can provide advice. The council infection control team is available 09:00 – 17:00. Out of these hours the PHE North West Health Protection Team is available 24 hours a day 7 days a week. Arrangements for the Christmas period are below.

Day	Date	Contact
Thu	24/12/2020	PHE North West Health Protection Team: In hours: 0344 225 0562 (option 0, then option 3) Out of hours 0151434 4819
Fri	25/12/2020	PHE North West Health Protection Team: In hours: 0344 225 0562 (option 0, then option 3) Out of hours 0151434 4820
Sat	26/12/2020	PHE North West Health Protection Team: In hours: 0344 225 0562 (option 0, then option 3) Out of hours 0151434 4821
Sun	27/12/2020	PHE North West Health Protection Team: In hours: 0344 225 0562 (option 0, then option 3) Out of hours 0151434 4822
Mon	28/12/2020	PHE North West Health Protection Team: In hours: 0344 225 0562 (option 0, then option 3) Out of hours 0151434 4823
Tue	29/12/2020	infectioncontrolprevention@bury.gcsx.gov.uk 0161 253 6902
Wed	30/12/2020	infectioncontrolprevention@bury.gcsx.gov.uk 0161 253 6903
Thu	31/12/2020	infectioncontrolprevention@bury.gcsx.gov.uk 0161 253 6904
Fri	01/01/2020	PHE North West Health Protection Team: In hours: 0344 225 0562 (option 0, then option 3) Out of hours 0151434 4819
Sat	02/01/2020	PHE North West Health Protection Team: In hours: 0344 225 0562 (option 0, then option 3) Out of hours 0151434 4820
Sun	03/01/2020	PHE North West Health Protection Team: In hours: 0344 225 0562 (option 0, then option 3) Out of hours 0151434 4821
Mon	04/01/2020	infectioncontrolprevention@bury.gcsx.gov.uk 0161 253 6904

Early Years Funding

All details below have been sent to providers via email.

Early Years Census

An email on completing the 2021 census will follow, every funded PVI EY setting in England is required to provide the necessary information to their local authority to enable them to complete this return. **No "Actual" funding can be paid until this information is received**

All English Providers of free early education in the Private, Voluntary and Independent (PVI) sectors are within the scope of the Early Years Census. In 2008, it became mandatory to collect the data for the Early Years Census at individual child level. The individual level data collection from Private, Voluntary and Independent (PVI) Providers is a statutory requirement on Providers and LAs through regulations under Clauses 99 – 101 of the Childcare Act 2006 (Statutory Instrument 2007 No. 712 - The Education (Provision of Information About Young Children) (England) Regulations 2007).

Child level data is required from any PVI setting where one or more of their children (aged 2, 3 and 4 years as at 31 December 2020) are receiving early years education that is funded by the DfE via the local authority.

- Child Identifiers (Surname, Forename, DOB, Gender, Child preferred surname)
- Ethnicity data
- The establishment must not ascribe any ethnicity to the pupil. This information **must** come from the parent / guardian. Where the ethnicity has not yet been collected this is recorded as 'NOBT' (information not yet obtained). If a parent has refused to provide ethnicity, 'REFU' (refused) is recorded and returned
- SEN data
- Home information (Address & Postcode)
- Total hours attended and EEE hour attended at the provision
- Early Years Pupil Premium funding

*****Please ensure the "Present on Census day" box is ticked all children present when completing your headcount information along with SEN status ******

30 Hours Childcare

Please encourage parents to continue to apply for, and reconfirm, their 30 hours entitlement. **Parents must have applied by 31st December to be eligible from January 2021.**

Where possible, please ensure that parents provide you with their 30 hour code prior to your setting closing for Christmas. This will enable you to check the code is valid prior to January and enable parent's to correct any issues before 31st December.

Please email earlyyearsfunding@bury.gov.uk with any 30 hour code queries.

Disability Access Fund (DAF)

3 and 4 year olds will be eligible for the DAF (**£615 per year**) if they meet the following criteria:

- the child is in receipt of Disability Living Allowance (DLA)
- the child receives the universal 15 hours entitlement

For more information and details of how to apply, please email earlyyearsfunding@bury.gov.uk

Charging Parents

- We urge all childcare providers to be reasonable and balanced in their dealings with parents, given the great uncertainty they will be facing too.
- Providers may charge for consumables in line with [national entitlements guidance](#). As per existing guidance, they should consider the impact of charges on disadvantaged families
- [Actions for early years and childcare providers during the coronavirus \(COVID-19\) outbreak](#) **point 10.9** relates to charging parents

The Government has confirmed that from Sunday 1 November, eligible working parents who receive support through the Government's new Job Support Scheme and extended Self Employed Income Support Scheme will continue to receive their childcare entitlements, including the 30 hours offer and tax free childcare even if their income levels fall below the threshold temporarily whilst on these scheme. [Click on the link](#) for more information. *Published Gov.UK 26/10/20*

Business Support

We recommend you visit <https://www.gov.uk/coronavirus/business-support> this includes:

- Funding Support
- Self-employed people and sole traders
- Your responsibility as an employer
- How to run your business safely
- What businesses should be closed

You should also visit [Find coronavirus financial support for your business](#)

The council's dedicated Bury Means Business team is here to help all businesses with advice and help during the pandemic: go to <https://burymeansbusiness.bury.gov.uk/> for more details.

Grants for business

Our Bury Means Business team is working hard to process and pay out business support grants, available to businesses that have been affected most by local restrictions and lockdown.

Grants available include the £4m Additional Restrictions Grant pot for businesses severely affected by the restrictions. The council has drawn up a list of priority areas for the first tranche of these grants, and these include:

- Bury and Radcliffe market traders
- Companies within the events sector
- Companies in the retail, hospitality and leisure sectors - who are legally required to close, occupy a rateable premise, but do not pay rates
- Companies whose main service is supplying businesses legally required to close in the retail, hospitality and leisure sector
- Childcare organisations within commercial settings.

As Additional Restrictions Grant funding is to remain in place until March 2022, we would urge businesses to read the guidance carefully before applying, and thank everyone for their patience as we focus on getting payments out to eligible businesses as quickly as possible.

Also available are £3m worth of Local Restrictions Support Grants for local companies forced to close by the national coronavirus lockdown. Many of these have now been distributed, with the remainder due to be paid in the next few days.

Businesses can check grant eligibility on the council's website at <https://www.bury.gov.uk/covid19grants>

FREE* National Business Support Zoom Webinar for early years and childcare providers

19th January 2021

9:45 am to 12:30 pm <https://www.eventbrite.co.uk/e/business-map-a-national-webinar-for-early-years-and-childcare-providers-tickets-131608780405>

or

6.30 pm to 8.45 pm <https://www.eventbrite.co.uk/e/business-map-a-national-webinar-for-early-years-and-childminders-tickets-131614619871>

There are 1000 places available nationally. Places are FREE and are awarded on a first come, first serve basis. There is no limit to places per provider so please nominate key staff members to attend.

The DfE has funded Hemsall's to deliver a new national webinar for all types of early years and childcare provider. **You can book your FREE place(s) today by clicking the links above.**

Managing an early years and childcare setting, whether it be a homebased childminder, out of school club, a small voluntary playgroup, a nursery or a chain, a school or children's centre, is complex task. It is one of balancing quality, health and safety, with parents' and children's needs, funding and fees, and business sustainability.

The webinar will outline steps providers could take to business plan for now, summer term and across 2021. Developed around a six-step Business Map process, the webinar will assist anyone thinking about necessary business decisions to support business change and sustainability, whether they are new to the role or an experienced manager.

James Hemsall OBE, director says: "At Hemsall's we've spent 20 years helping providers to create childcare places, introduce funded early years entitlements for two-, three- and four-year-olds, and manage business sustainability. This year has been no exception and our team has been busy delivering very many online information sessions, online training workshops and one-to-one business support to make sense of the current business needs in early years prompted by COVID-19. Hemsall's has been asked by DfE to share our approach and some new tools and resources, as well as highlighting all the support that already exists in the sector."

- **Why is it called Business Map, and what is it aiming to achieve?** We know there are a lot of business planning tools out there. We didn't want to duplicate that. We know there is a need for thinking about a whole process of looking at the current and future needs of childcare businesses. The Business Map shows the way.
- **How has it been developed?** Business Map has been developed this year through very many information, training and one-to-one business support sessions. We have listened to the challenges and needs of settings and created something new and different.
- **What are the six steps?** We start by looking at what's changing, then how we find out more about how this affects each setting. After which there is a risk assessment process, this is more about identifying what the pressure points are. Then we explore possible ideas and options, including what has worked for others. After that we help everyone to consider their own plans and decisions. At the end there is a review and the process starts again if adaptations are needed.
- **What is on offer?** Webinar attendees will be able to download the FREE Business Map, certificate of attendance, and supporting resources at the end.

If you require any further information, you can contact Hemsalls at info@hemsalls.com

If you need any more information regarding funding please contact Early Years Funding earlyyearsfunding@bury.gov.uk

Adele Reith

Tel: 0161 253 7665

Research and Information Officer | Early Years | Childrens Finance

Jenny Allen

Childcare Sufficiency Officer | Early Years | Childrens Finance

Tel: 0161 253 6917

Family information Service

In order for us to keep our information accurate and correct, please can you log on to the provider portal and complete the "Provider Update" form in the forms section.

The portal holds information on local sufficiency which we have to report back to central government. This portal needs updating with your charges, school pick-ups/drop offs, availability and vacancies. These details need to be updated as and when changes occur (at least once a year) or there may be specific times we ask you to log on and check your details are up to date for example when we have information requests from the Government/DFE.

If you have completed this form before it will be pre populated with details previously submitted. Please check these are correct and amend where needed if nothing has changed just click submit so we know the information we have is correct.

The form will be available until 1st December 2020.

Should you have any queries, please contact childinfo@bury.gov.uk

Early Years Foundation Stage



World Nursery Rhyme Week

Thank you to Arley Acorns for sharing with us how they celebrated World Nursery Rhyme Week!

'We actually ran NR week over two weeks to give the children time to consolidate their learning. Some of the nursery rhymes we were already singing but 5 Little Speckled Frogs and Miss Polly were new to us.

We started before NR week by sending home song sheets so parents had the words. We then introduced each rhyme through a tuff spot for the children to explore.

At the end of NR fortnight we gave each child a "goody" bag with the free NR booklet in and props for each of the rhymes to share at home.

We have a rhyme card and a puppet or prop for each of the rhymes in our rhyme basket and each day the children choose a prop and we go round the group singing each rhyme in turn.'





Early years foundation stage statutory (EYFS) disapplications

DFE have updated the [early years foundation stage \(EYFS\) statutory framework disapplications guidance](#) to clarify:

- when the disapplications apply in a period of local or national restriction
- how requirements for staff to self-isolate is considered for disapplications
- details of paediatric first aid certification requirements for providers on the general childcare register

The date for extensions of paediatric first aid certificates is currently under review and will be confirmed shortly.

Foundation Years have launched a new hub to support all early years providers during the COVID-19 outbreak. It includes the latest policy updates, Government guidance, and free resources from across the early years sector all in one place.

COVID-19 resources hub

[→ PDF](#)

This hub includes all the latest policy announcements, Government guidance, and free resources from across the sector to support all early years providers during the COVID-19 outbreak.

[Government policy and guidance](#) [Resources for early years settings](#) [Resources for parents and carers](#) 

The hub will be updated as new resources become available and we will continue to send key updates straight to your inbox so you don't miss a thing.

If there is anything you would like to see added to the hub or if you have any feedback, please get in touch at foundationyears@ncb.org.uk.

[Explore the hub](#)

Ofsted have announced their new [Early Years inspection arrangements](#) for when full early years inspections have resumed following the adjustments introduced with the pandemic. The new arrangements include prioritising providers rated less than good. Ofsted will schedule early years inspections based on the most current risk assessment of the provision from its work as a regulator, including each provider's previous judgement. All early years providers will be inspected in a 6-year window from the date of their last inspection. Ofsted will still aim to inspect all new childcare providers within 30 months of registration where possible, childcare providers judged to require improvement will be inspected within a year and inadequate childcare provision will be inspected within 6 months.

Please see full guidance around Ofsted inspections

<https://www.gov.uk/government/news/ofsted-phased-return-to-inspections>

Support for early years settings regarding children's nutrition and health.

Please see below the first 'Early Years Nutrition and Health Newsletter'. You will be able to read all about the Bury Food Strategy that will be launching in 2021.



Nutrition
newsletter Nov 20.p

Bury Early Years Communication Champions

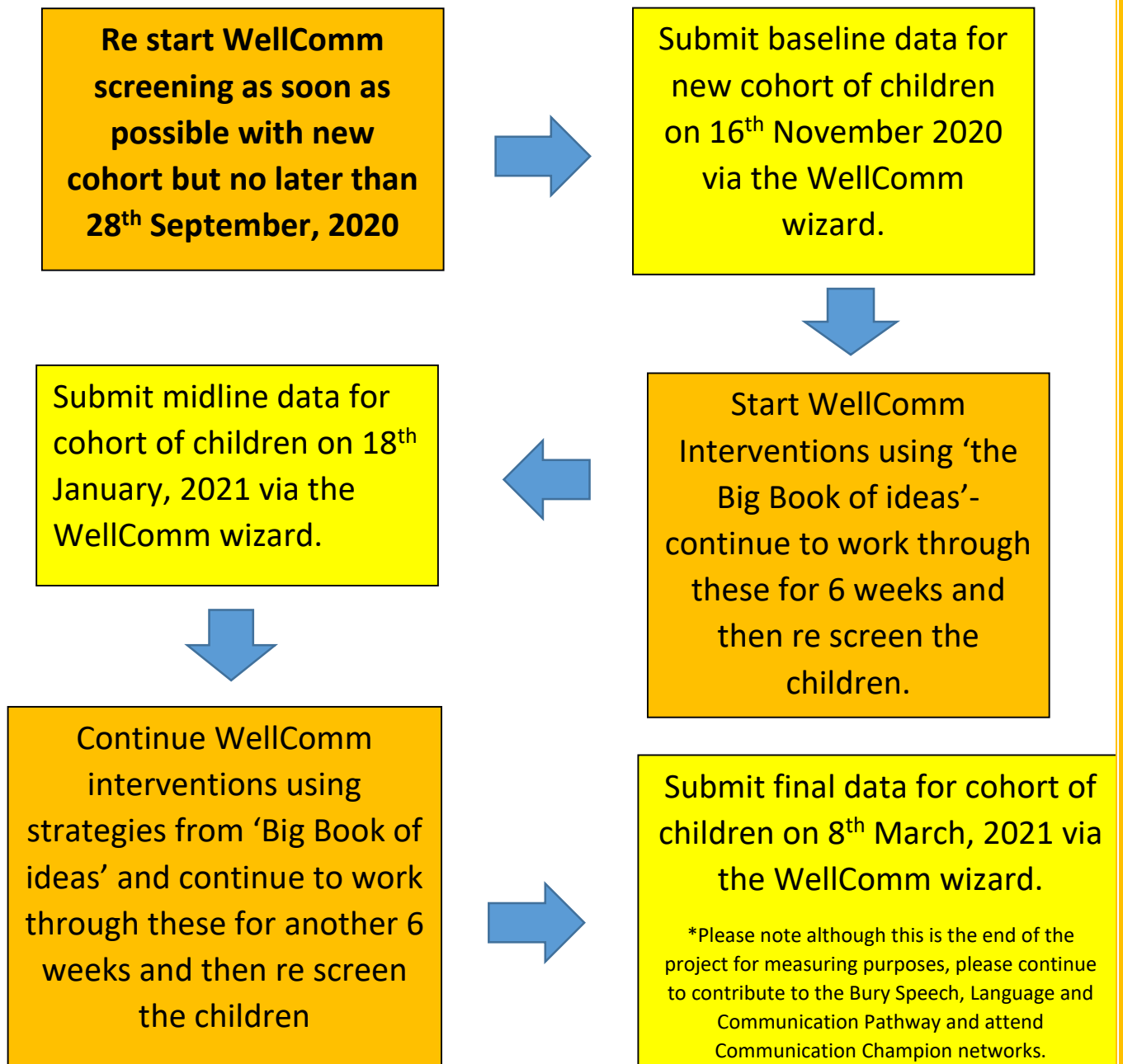
Thank you!

A huge thank you to all our Communication Champions in those Early Years Settings who are taking part in the WellComm project and who have recently submitted the first set of data for your setting.

Please see the timeline below for the next dates for submission.



**WellComm data collection timeline for Pathways to Talking Project-
September 2020- March 2021.**



Continue WellComm interventions using strategies from big book of ideas and continue to work through these for 3 months and then re screen the children at their chronological age. You will have the opportunity to continue to use the WellComm wizard until the end of 2021 funded by Pathways to Talking budget.

Safeguarding

Supporting and Promoting your awareness around Private Fostering

What is Private Fostering?

Private Fostering is when a child under the age of 16 (or under 18 if disabled) is cared for by someone who is not their parent or a 'close relative' for 28 days or more (Children Act 1989 s.66 England).

Close relatives are defined as step-parents, grandparents, brothers, sisters, uncles or aunts (whether of full blood, half blood or marriage/affinity)

Please see the attached pdf of Private Fostering PowerPoint.



Private
Fostering.pdf

The following link will also take you to a 9 minute video that is a guide to Private Fostering, "Somebody else's child"

<https://www.youtube.com/watch?v=vQDVzHXdISA> (in accordance to the L.A accessibility guidance, best accessed between 12pm & 2pm and dependant on permissions))

How to make a referral

- Let the child's carer know that they have a duty to notify Children's Services. They will be assessed and can receive support and advice from a social worker.
- Contact the Multi Agency Safeguarding Hub (MASH) 0161 253 5678

Let them know you are aware of a child living with someone who is not their parent or legal



click the Rainbow to visit the BISP website

Please find updated information on DBA's

(Disqualification By Association) no longer need to be completed by settings or LAs only childminders

Behaviour Management and codes of conduct

Below is a link to resources that you may find useful by the NSPCC regarding Behaviour Management and codes of Conduct

<https://learning.nspcc.org.uk/research-resources/templates/behaviour-codes-adults-children>

Early years Q&A – national lockdown

This week the Dfe has updated its Q&A on national lockdown and how this impacts upon the work of early years providers and settings an interesting read .

More

Tackling child abuse

To coincide with World Day for Prevention of Child Abuse, Thursday 19 November, the DfE re-launched its *Together, We Can Tackle Child Abuse* campaign aimed at increasing awareness of the signs of all forms of child abuse and neglect, as well as confidence levels in knowing how to report suspicions. This latest round of activity includes a new element centred around online child sexual abuse, due to the heightened risk to vulnerable children of exposure to online sexual abuse during these times where they are having to remain at home more than usual. There are some useful

More

The national helpline has seen an increase of 80% of calls for support

please find attached a short fact sheet for you to refer to which I hope you find useful, it will be added to our only Early Help toolkit on the Bury Directory.



Fact Sheet No 16
Domestic Abuse imp

Please note: During the coronavirus pandemic these procedures still apply.

If you are concerned about the welfare of a child, you should contact:

- **Bury Multi-Agency Safeguarding Hub (MASH) Team on 0161-253-5678 or outside of office hours the Emergency Duty Team on 0161-253-6606; or**
- **Greater Manchester Police on 101.**

If the child is in immediate danger ring Greater Manchester Police on 999.

Safeguarding e- learning

-Are you aware that there are a number of e learning links available for early year's practitioners to access on Bury Integrated Safeguarding partnership website? Many of these courses are free. (Please see training and development section for more information below)

Keep up to date with everything you need to know about safeguarding children in Bury by visiting:

<https://burysafeguardingpartnership.bury.gov.uk/index.aspx?articleid=8876>

Send & Inclusion

Please share with families that you come in contact with who may be eligible

Grants for families raising disabled children remain available from Family Fund

Family Fund is a UK-wide charity that provides grants for essential items to families on low incomes raising disabled or seriously ill children, up to the age of 17.

Since the beginning of the pandemic, Family Fund has continued to provide vital support to families, and has seen a significant increase in applications. In May, in response to this extra need, the Department for Education provided a further £10 million in additional funding to the £27.3 million it had already committed to Family Fund, which has allowed them to support thousands more families.

This funding is still available, and families can apply for a grant right now by visiting <https://www.familyfund.org.uk/FAQs/how-do-we-apply>

Families can apply online, by downloading an application form, or by ordering one to be sent to them.

Bereavement Model Policy for Early Years

Please find updated policy Sep 2020



WSP Bereavement
Model Policy for ear

Confidential telephone service available to all residents in Bury who are experiencing difficulties with their mental wellbeing, they will signpost you to the right local service

Telephone number 0161 464 3679 (Mon- Sat 8am to 8pm)

Email address gettinghelpline@earlybreak.co.uk

Training and information

Please find below a training session that will support you to understand Dyslexia, I have been living with Dyslexia for over 52 years and thought I knew all that there was to know.

I was surprised after doing the training how much I did not know about the condition and how the condition makes me who I am and how it should be something to embrace and not feel ashamed off (Samantha McLaren)

https://connect-the-spots.madebydyslexia.org/?utm_source=facebook&utm_medium=organic&utm_campaign=mbd-internal&fbclid=IwAR0V9hSu0wC2AnLAQSxkmhPoT4U4lrYGc0joB4CLPyKgabrPmLNI E4UiWQw



National Literacy Trust

Is an independent charity working with schools and communities to give disadvantaged children the literacy skills to succeed in life, they offer researched based resources and training programmes from early years to secondary

Hungry Little Minds update.

The second Hungry Little Minds online story, produced by Manchester Art Gallery and National Literacy Trust was posted over the weekend on Saturday 7th November at 12 on the Read Manchester Facebook page. It was 'What Shall we do with the Boo Hoo baby' by Cressida Cowell, we'll be doing lots of follow up activity ideas on the page over the course of the next few weeks.

They held an outdoor trail event in conjunction with the green space parks manager in Crowcroft Park, Longsight on 27th October. This was themed around last month's story, The Snail and the Whale and included a trail of snails and clay making, mark making and giving information to families about HLM in a socially distanced way. All activities were designed for families to do in their family bubble in a family led way. In addition, an activity pack and The Snail and the Whale story book has gone to homeless families in Manchester through health visitors, families linked with the parenting and relationship team that run parenting courses in Tameside and families linked to a food bank in Trafford.

Their next event will be a Zoom based event done in partnership with the gallery during December, where they will do some story and singing activities and Katy from the gallery will do some mark making craft activities, that will be themed around Christmas and 'The Gruffalos Child', as that is our December story. We hope to work with settings and early years teams to go about inviting families and will be sending out an invitation soon, once we have looked at the details and got our firm date.

They are continuing to reach out to early years teams and make partnerships to spread the word about the website and Manchester based content that is available.

6 in 10 children and young people said that reading made them feel better in lockdown. Read more findings from our latest research.

All proceeds allow the National Literacy Trust to equip those who need it most with the literacy skills to succeed in life.

Here is the link to the face book video

<https://fb.watch/1GcD2GUTul/>

Stress awareness... and top stress busting tips for your setting

Stress and mental health issues have never been more significant than now, and the challenges they present to millions of people never more serious than in the wake of the coronavirus pandemic. These new challenges are of utmost concern for employers as well as individuals, as growing evidence shows their effects.

Read our helpful article and try some of our the stress busting tips, which you can either discuss in team meetings, or one-to-ones.

Read more

Read more

Physical Development – GM 10 tips for moving

It is more relevant than ever due to lockdown restrictions and dark evenings to ensure children keep moving,
Below are some leaflets that will support with all aspects of the 10 top tips for moving for different age group

This is the first tweet was sent out by Greater Sport on the 25th November to promote the toddler moving tips –

<https://twitter.com/GreaterSport/status/1331565364505882624>

We will be back in the New Year with our first 2021 e bulletin, but for now
Happy New Year to you all ☺

