



GREATER MANCHESTER  
FIRE AND RESCUE SERVICE

Greater Manchester  
Fire & Rescue Service

Community Resource Brochure

# Contents

<b>Introduction &amp; Context</b>	<b>03</b>
<b>What is on Offer</b>	<b>04</b>

<b>Prevention and Community Engagement</b>	
Safe and Well	06
Volunteering	07
Princes Trust	08
Community Fire Cadets	09
Fire Smart	10
Alternative Curriculum	11
Salford Integration Prevention Hub	12
Moss Side Fire Station Boxing Club	13
Road Safety	14
Survival Academy	16
GMFRS Museum	17
Irlam Climbing Wall	18

<b>Protection</b>	
The Protection Remit	20

<b>Community Resources</b>	
Community Rooms	22
Conference Facilities	23
Community Vehicles	24
Greater Manchester Fire & Rescue Service Training and Safety Centre	25

<b>Recruitment</b>	<b>26</b>
<b>Contact Centre</b>	<b>27</b>
<b>Appendix</b>	<b>28</b>

# Introduction & Context



Greater Manchester Fire and Rescue Service (GMFRS) is one of the largest fire and rescue services in the UK.

The Service covers approximately 500 square miles and the ten boroughs of Greater Manchester, which has a culturally diverse population of 2.5 million people.

The areas we serve are Manchester, Salford, Trafford, Rochdale, Wigan, Bolton, Bury, Oldham, Stockport and Tameside.

GMFRS isn't just about responding to emergencies, the Service also strives to make a positive difference to communities across the City Region. Its principle aims are to Save, Protect and Improve the lives of the people of Greater Manchester.

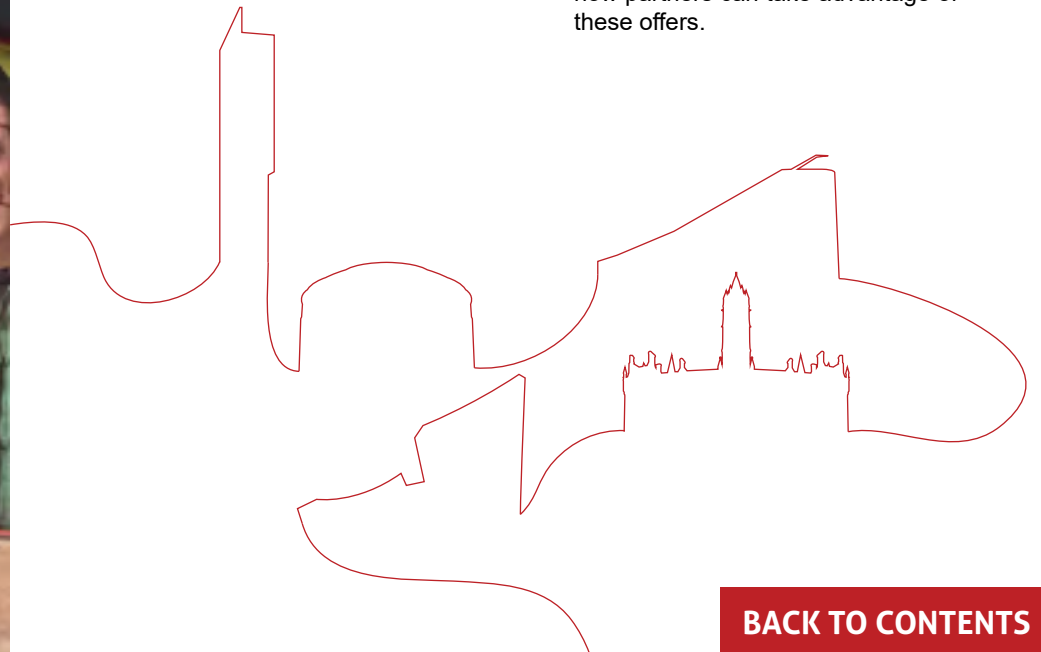
As the number of incidents GMFRS attends has reduced the role of the Service has changed.

GMFRS has made a significant contribution to improving the health, wellbeing and safety of local communities, by carrying out prevention work with partners.

In a climate of reform and transformation it is important that the term 'partnership working' is considered in its broadest sense.

Health, housing, social care, the 3<sup>rd</sup> sector and fire and rescue services must think creatively about how they can work together to improve outcomes for the public to achieve common goals, while at the same time delivering efficiencies.

This brochure describes the different services GMFRS can provide and how partners can take advantage of these offers.



# What Is On Offer?



GMFRS has a wide range of activities, initiatives and resources which it uses to help engage with the local communities across the Greater Manchester area.

The following section will describe a range of activities / resources GMFRS offer, as well as:

- Who they are for
- How partners / individuals can access them
- Any cost implications



# Prevention And Community Engagement





A Safe and Well visit is a free person-centred home visit carried out by GMFRS staff. The visit offers more than our previous home safety checks by focusing on health, wellbeing and crime prevention as well as fire safety. A Safe and Well visit considers the householder, their home environment and lifestyle factors, in order to identify risks or needs and provide an effective response. A Safe and Well visit may include providing:

- Smoke alarms
- Fire safety advice
- Escape route plans
- Advice on health and wellbeing
- Advice on home security
- Safety equipment
- Signposting or referrals to other services/support

### Who is it for?

Anyone who lives in Greater Manchester can request a Safe and Well visit. Visits will be prioritised based on the needs of the household.

### How can I access it?

Telephone 0800 555 815

Fax a referral form to 0161 608 4041

Email: [contact@manchesterfire.gov.uk](mailto:contact@manchesterfire.gov.uk)

Secure email: [contactcentre@manchesterfire.cjsm.net](mailto:contactcentre@manchesterfire.cjsm.net)

Visit our website at [www.manchesterfire.gov.uk](http://www.manchesterfire.gov.uk) and complete our online form.

### What does it cost?

FREE

# Volunteering



Greater Manchester Fire and Rescue Service offers a range of opportunities for people interested in volunteering within the Service. There are different ways people can volunteer, such as:

- Cycle patrols
- The post-incident team
- Caged football instructors
- Cadet unit instructors
- Events and campaigns
- Wild fire and water safety
- Chaplain
- Climbing wall instructors
- Community fitness volunteers

We plan our recruitment campaigns carefully to give people advance notice of when application processes open and close and provide them with the dates of the selection events so they can prepare.

Volunteers have the opportunity to learn new skills, with full support and training as well as a uniform and ID badge.

## Who is it for?

Anyone who is interested in getting involved with the fire service and wants to help the local community, develop their skills and become an integral part of Greater Manchester Fire and Rescue Service.

## How can I access it?

The GMFRS volunteer recruitment window opens on a regular basis for specific roles. If you miss the window for submitting an application form, you could fill in an EXPRESSION OF INTEREST FORM and when recruitment opens you'll get a notification email inviting you to apply. Our events and campaign volunteer recruitment is open all year round. For more information go to:

[http://www.manchesterfire.gov.uk/working\\_for\\_us/become\\_a\\_volunteer](http://www.manchesterfire.gov.uk/working_for_us/become_a_volunteer)

## What does it cost?

FREE



The Youth Engagement Team is dedicated to engaging children and young people of Greater Manchester in a range of programmes, including one-to-one interventions, 12-week personal development programmes, two-year educational programmes and a two-year uniformed cadet programme.

### Who is it for?

The Prince's Trust Team programme is a 12-week programme for 16 to 25-year-olds who are out of work or education and aims to help them gain new skills, experience and confidence.

Young people work as part of a team, gain careers advice, work placements and take part in a series of community-based projects, as well as a residential trip, which is often to another part of the country for a few days.

Participants have the opportunity to work towards recognised qualifications, such as:

- Prince's Trust Certificate in employment, teamwork and community skills
- Health and safety
- Manual handling
- Basic food hygiene
- First aid at work
- Adult literacy and numeracy
- Personal, Employability, Achievement and Reflection for Learning (PEARL Qualification)

### How can I access it?

For more information on joining the GMFRS Team programme, please call the Contact Centre on 0800 555 815. Alternatively you can complete an online enquiry form or email [futureheroes@manchesterfire.gov.uk](mailto:futureheroes@manchesterfire.gov.uk)

For more general information about Prince's Trust visit:

[http://www.princestrust.org.uk/need\\_help/courses.aspx](http://www.princestrust.org.uk/need_help/courses.aspx)

### What does it cost?

FREE



# Community Fire Cadets



Community Fire Cadet Units offer young people an opportunity to learn basic firefighting skills while working towards both accredited and non-accredited qualifications.

It is also a fantastic opportunity to meet new people, improve social skills, experience working as a team and improve all-round confidence.

Young people will then have the opportunity to stay on with a cadet unit and become a junior instructor, with a further opportunity to become a volunteer instructor after the age of 18 years old.

## Who is it for?

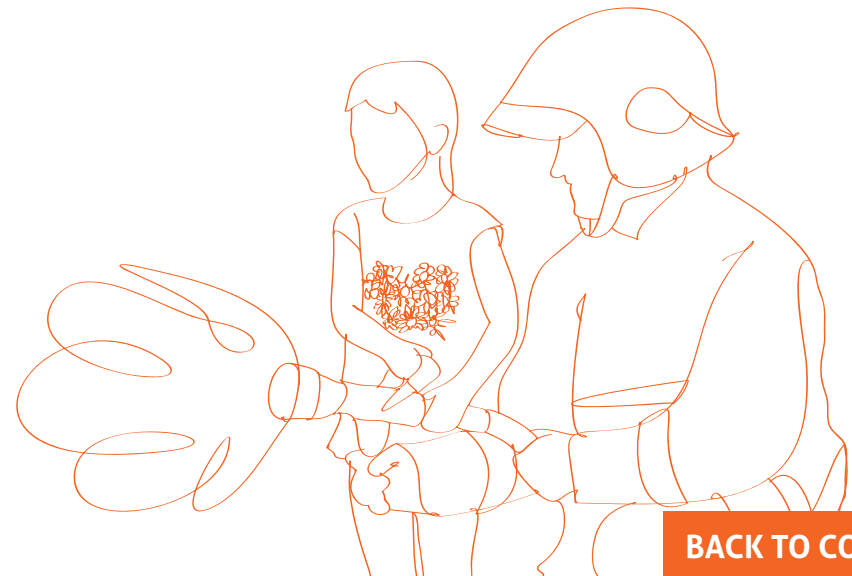
Community Fire Cadets is a two-year programme aimed at 14 to 17-year-olds who live in Greater Manchester.

## How can I access it?

Community Fire Cadet Units are generally recruited once a year. For more information please email [futureheroes@manchesterfire.gov.uk](mailto:futureheroes@manchesterfire.gov.uk)

## What does it cost?

FREE





Fire Smart is a confidential service provided by GMFRS aimed at working with children and young people (and their families) who have demonstrated fire setting behaviour.

Once referred onto the programme, we will arrange for a Safe and Well visit to be carried out as soon as possible at the residence of the child or young person.

GMFRS staff will then visit the child or young person at their home. The total number of visits carried out will vary depending on each individual circumstance.

Although this service is confidential, please be aware that there may be times where GMFRS will be required to share information with other relevant agencies to ensure the most appropriate support is being given to the child or young person and their family. Parental/guardian consent is always required before work with the child or young person can commence.

### Who is it for?

Children and young people who have displayed fire setting behaviour, as well as their families. The Fire Smart service is a programme which offers education and advice to anyone aged 17 years and under.

### How can I access it?

Children and young people may be referred onto this programme from a variety of sources including parents, teachers, youth offending teams (YOT) and a range of other services.

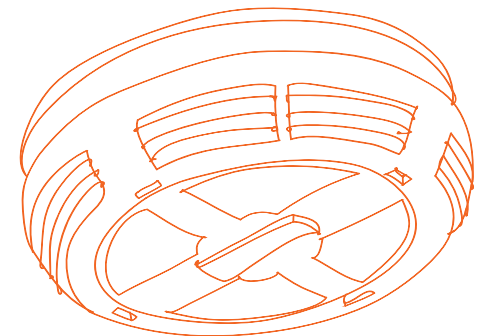
To make a referral you can submit the following form here:

<http://manchesterfire.gov.uk/apps/forms/FireSmart/>

or alternatively call 0800 555 815.

### What does it cost?

FREE



# Alternative Curriculum



GMFRS offers two alternative curriculum programmes for young people who are struggling within mainstream education, involved in anti-social behaviour or those who need to improve and boost their self-esteem and motivation for learning and life. Programmes are delivered on community fire stations across Greater Manchester.

Firefly is a five-day programme aimed at young people aged 13 to 16-years-old. The programme is delivered by youth engagement staff with the aim of encouraging young people to change their behaviour and understand community safety and risky behaviour.

Firefly offers young people an opportunity to learn firefighting skills and first aid, as well as help improve their communication, encourage team working and learn about the consequences and impact of anti-social behaviour.

FireTeam is a flexible programme that can be delivered for 12 weeks or longer, which offers an alternative approach to learning. This is an accredited programme for young people who are 14-years-old and over.

There are a number of benefits to the course, including meeting new people, getting an insight to the fire and rescue service and an opportunity to work towards a range of accredited opportunities such as ASDAN Short Courses or a Level 2 qualification.

## Who is it for?

Fire Fly – 13 to 16-year-olds

Fire Team – 14 years and over

GMFRS welcome any young person who may be experiencing difficulties in engaging with school or their peers through low self-esteem or a lack of confidence.

## How can I access it?

For more information please email: [futureheroes@manchesterfire.gov.uk](mailto:futureheroes@manchesterfire.gov.uk)

## What does it cost?

Costs will vary dependant on requirements. Please note costs are covered by the school / organisation, not the young people.

# Salford Integrated Prevention Hub



The Salford Integrated Prevention Hub (SIPH) is a unique partnership based in the City of Salford.

The SIPH partners – Greater Manchester Fire and Rescue Service (GMFRS), Greater Manchester Police (GMP) and Salford City Council (SCC) – are working together to deliver interventions and vital services within the community. Their primary aim is to work together to deliver support services to increase positive outcomes for young people and their families.

By better sharing resources and referrals, the partners aim to deliver vital services at a time when budget cuts are reducing support.

Young people will be offered access to a range of interventions including face-to-face support, group work, outreach work and family conferencing. SIPH will also act to signpost people to existing local projects and will access GMFRS's youth engagement programmes.

Each hub provides a range of integrated multi-agency interventions addressing the complex needs of the most vulnerable young people and their families.

## Who is it for?

Residents of the Salford area.

The project is addressing the needs of 11 to 25-year-olds and their families who fall within the 'Complex Dependency' cohort.

## How can I access it?

For more information email Tim Rumley on [tim.rumley@salford.gov.uk](mailto:tim.rumley@salford.gov.uk)

## What does it cost?

FREE

# Moss Side Fire Station Boxing Club



Moss Side Fire Station Boxing Club was originally set up in 2008 by a group of firefighters to engage with young people within the local area and discourage attacks on operational fire fighters. Since then the club has gone from strength to strength.

The aims and objectives of the club are to:

- Provide meaningful engagement with young people in the community
- Promote and develop personal qualities and attributes in members
- To act as role models
- Encourage community cohesion
- Break down barriers
- Provide an environment that challenges and empowers all members, regardless of age, gender, and disability, cultural or religious affiliation
- Improve members' physical fitness

## Who is it for?

Anyone who is interested in boxing, or is just looking to get fit. Moss Side Fire Station Boxing Club has classes which cater for a variety of people:

- Open age fitness
- Mixed adult classes
- Under 10s
- Junior amateur
- Senior amateur
- Women only
- Classes for people with disabilities

## How can I access it?

For more information visit [www.mosssidefirebox.com](http://www.mosssidefirebox.com) or contact the club directly on 0161 6085215.

## What does it cost?

Sessions cost £2 for over 16s.



The 16 to 25 age group is known to be at significantly greater risk of death or injury on the roads, especially during the first two years after passing their driving test. GMFRS and partners have several road safety resources – many of which focus on new drivers and young people who are approaching driving age.

These road safety resources are:

- **Safe Drive Stay Alive**

Safe Drive Stay Alive, is a multi-agency partnership between:

- Greater Manchester Fire and Rescue Service
- Greater Manchester Police
- North West Ambulance Service
- Salford Royal Foundation Trust
- HMP Forest Bank
- Drivesafe
- Families affected by road traffic collisions
- Greater Manchester colleges

The project has come together to help reduce the number of young drivers and passengers who are killed or sustain injuries in Greater Manchester.

Safe Drive Stay Alive runs every November and all Greater Manchester colleges and youth groups are invited to attend, free of charge. It is an emotionally-charged performance based around a series of short films and live speakers from each of the emergency services as well as family members whose lives have been affected by the tragedy of losing a son or daughter in a road traffic collision.

Our messages are supported by a Safe Drive Stay Alive college resource pack that enables young people to explore their own tendencies to take risks or be influenced by pressure from others to do so. Students are then asked to develop their own individual SAFE action plan to minimise risks as drivers or passengers.

- **1 in 3**

1 in 3 is a classroom-based road safety resource aimed at 16 to 25-year-olds. The resource pack contains an electronic presentation, a trainer's guide and downloadable PDF's to aid practical exercises. A simple pre-education and post-delivery questionnaire is provided to evaluate the impact of the resource on young people's attitudes and behaviours towards road risks.

Each GMFRS community safety team holds a number of 1 in 3 resource packs and staff have been trained and equipped to deliver sessions.

**Continued on next page.**

# Road Safety Continued



## • Wrecked

Wrecked is a DVD and web-based resource developed by the Greater Manchester Casualty Reduction Partnership, which can be found at [www.wrecked.org.uk](http://www.wrecked.org.uk).

The resource contains a series of films and fact sheets aimed at stimulating group discussion on key road safety issues such as speeding and drink and drug driving.

Each GMFRS community safety team holds a number of Wrecked resource packs.

### Who is it for?

**Safe Drive Stay Alive:** Aimed at schools and colleges across Greater Manchester (target age range 16 to 19).

**1 in 3:** Aimed at 16 to 25-year-olds and staff teams can deliver it in schools, colleges, youth groups, youth offending teams etc.

**Wrecked:** Available online for anyone working with young people to address issues such as speeding, drink and drug driving.

**Driving simulator vans:** GMFRS has two driving simulators, which are both housed within VW Sportsline Transporter vans. These are popular resources when working with young people, as they allow them to demonstrate their skills such as emergency braking, hazard perception and motorway driving. They also contain modules demonstrating the dangers of texting whilst driving, drink driving and tired driving.

### How can I access it?

For more information please contact Lesley Allen at [allenl@manchesterfire.gov.uk](mailto:allenl@manchesterfire.gov.uk)

Wrecked: [www.wrecked.org.uk](http://www.wrecked.org.uk)

Safe Drive Stay Alive: [www.SafeDriveGM.co.uk](http://www.SafeDriveGM.co.uk)

### What does it cost?

FREE

# Survival Academy



GMFRS is part of the Survival Academy with the North West Ambulance Service (NWAS) and other partners and aims to improve survival rates from out of hospital cardiac arrest (OHCA) across Greater Manchester. The ultimate aim is to ensure as many people as possible, both within GMFRS and the wider public, become familiar with Cardiopulmonary Resuscitation (CPR) and the use of automatic electronic defibrillators (AEDs).

More than 30,000 cardiac arrests happen out of hospital in the UK each year, with less than one in 10 surviving.

The Survival Academy is based at the new GMFRS Training and Safety Centre in Bury, where staff from across GMFRS will be trained in CPR and more.

There will also be the opportunity for visiting groups, schools and the wider public to undertake training in CPR and using an AED. For those groups who are unable to travel to Bury this opportunity may be available at alternative GMFRS venues across Greater Manchester.

## Who is it for?

All Greater Manchester residents and any visitors to the Training and Safety Centre in Bury.

## How can I access it?

Email: [safetycentre@manchesterfire.gov.uk](mailto:safetycentre@manchesterfire.gov.uk)

Tel: 0161 608 3571

Website: <http://safetycentre.manchesterfire.gov.uk/>

## What does it cost?

FREE





Greater Manchester has played a significant role in the development of firefighting and fire engineering and this long and proud history can be explored at the Fire Service Museum located on the site of the former Rochdale Fire Station.

The Museum is made up of 23 larger exhibits, the oldest dating from 1741, which make up the appliance fleet. These are supported by items of firefighting equipment, uniforms, models, medals and other objects.

Parts of the museum are organised to represent period tableaux, including a Victorian fire station and a Second World War Blitz scene.

There is also an extensive archive, images and a sound recording collection.

### Who is it for?

The general public, including schools and colleges.

As well as exhibits there is also an accredited education service, which offers sessions for pupils and students of all ages, from reception to A-level.

Regular topics include The Great Fire of London, People Who Help Us, Victorians, Uniforms and The Blitz.

### How can I access it?

For full details you can contact the museum directly at:

Greater Manchester Fire Service Museum  
Old Fire Station  
Maclure Road  
Rochdale  
OL11 1DN

Tel: 01706 341219

Email: [museum@gmfsmuseum.org.uk](mailto:museum@gmfsmuseum.org.uk)

Web: [www.gmfsmuseum.org.uk](http://www.gmfsmuseum.org.uk)

The Museum opens every Friday (except Bank Holidays) and on the first Sunday of the month (except January), from 10am to 4pm.

### What does it cost?

Admission is free for general visitors, with a small charge for educational sessions.

# Irlam Climbing Wall



The Greater Manchester Fire and Rescue Service Irlam climbing wall is the first Realform climbing wall in the country to be permanently located at a fire station.

The wall caters for all fitness levels and abilities.

## Who is it for?

The Irlam climbing wall has been developed for the use of local youth and community groups.

The sessions are open to groups from the age of six and will last up to two hours. Group size can be from as little as four to a maximum of 18.

Greater Manchester Fire and Rescue Service Climbing instructors will be on hand to supervise your sessions.

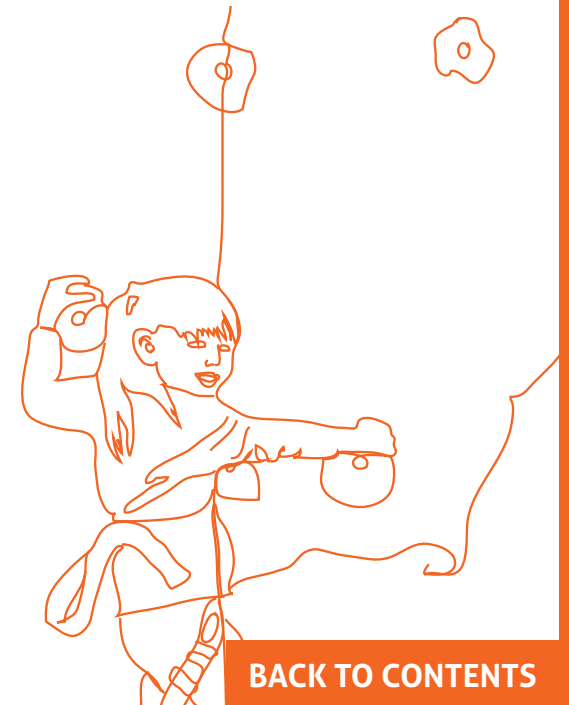
## How can I access it?

For more information and to book please email [climbingwall@manchesterfire.gov.uk](mailto:climbingwall@manchesterfire.gov.uk)

Please ensure any bookings are made a minimum of two weeks in advance.

## What does it cost?

FREE



**Protection**



# The Protection Remit



The GMFRS protection team has a wide remit delivering our statutory obligation to enforce the Regulatory Reform (Fire Safety) Order, as well as many other duties.

The protection team includes:

- **Enforcement Fire engineering**
- **Fire investigation**
- **Health and safety**
- **Operational intelligence**
- **Petroleum and explosives**
- **Primary authority and technical**

The team also work to promote fire safety standards and offer assistance to companies to aid them in complying with the law.

The Protection teams inspect and audit premises for compliance with the fire laws (including petroleum and explosives (fireworks) licensing). Officers may take action to improve buildings as necessary, often in the form of advice and guidance, but this can be more formal including prohibiting buildings from use if they are dangerous.

Guidance for different types of businesses can be found at; <https://www.gov.uk/government/collections/fire-safety-law-and-guidance-documents-for-business>

In addition to this, Protection teams deal with planning and building regulations, complex buildings (fire engineering), operational intelligence (providing key information for firefighters) about building layout, design and safety systems.

## Who is it for?

All business types will need to be aware of their legal requirements.

## How can I access it?

Guidance can be found at: <https://www.gov.uk/government/collections/fire-safety-law-and-guidance-documents-for-business>

## What does it cost?

FREE



# Community Resources

# Community Rooms



GMFRS has a number of modern and spacious community rooms at stations throughout Greater Manchester. These rooms are flexible and large enough to accommodate anything from chair aerobics and yoga, to formal meetings and presentations. The average community room can accommodate between 10 to 20 people dependant on the activity taking place, with larger rooms, being able to hold up to 50 people.

All community rooms are fitted with large screens, projectors and computers, to meet the needs of any potential users.

## Who is it for?

The rooms are available for the community to use free of charge for relevant activities.

## Restrictions:

Please note that these rooms **may not** be used by any political party or by individuals engaging in what is perceived by GMFRS to be political activity. They **may not** be used for commercial use.

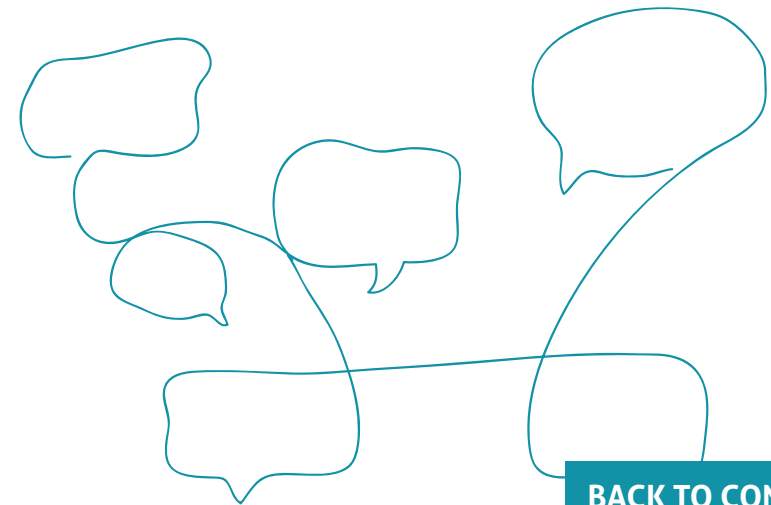
## How can I access it?

Booking requests can be made via our online booking system:

<http://bookings.manchesterfire.gov.uk>

## What does it cost?

FREE



# Conference Facilities



GMFRS has a suite of meeting rooms and conference facilities (with parking), which are located within Manchester City Centre. All meeting rooms have internet access and white boards. Rooms can accommodate between 10 to 20 people.

GMFRS also has a state-of-the-art conference room, which can facilitate up to 150 people.

## Who is it for?

Conference facilities are available for partners and other agencies to book. There is also the option to arrange drinks and catering facilities for an additional fee.

## How can I access it?

To book a meeting room or conference facilities, contact the facilities team at the Training and Development Centre on:

Tel: 0161 908 5155

Fax: 0161 908 5130

Or Email: [TCRoomBooking@manchesterfire.gov.uk](mailto:TCRoomBooking@manchesterfire.gov.uk) or [tdcreception@manchesterfire.gov.uk](mailto:tdcreception@manchesterfire.gov.uk)

Address:

Greater Manchester Fire and Rescue Service Training Centre  
Cassidy Close  
Manchester  
M4 5HU

## What does it cost?

Costs will vary dependant on requirements.

# Community Vehicles



GMFRS community safety vehicles provide staff and partners with resources to engage with communities more effectively. The vehicles are all designed with the necessary tools to inform and educate people in how to reduce the risk of fires and other emergencies.

The following vehicles are available for community activities:

- Driving simulator
- Parade vehicle
- Community event vehicle
- Caged soccer units

## Who is it for?

Our community safety vehicles and resources are available for community activities, as long as the event or activity addresses one or more of these key issues:

- Fire safety
- Healthy living
- Education
- Crime and disorder
- Housing
- Employment

## How can I access it?

To make a booking enquiry please contact us by calling:  
FREEPHONE 0800 555 815

For more information please see:

<http://manchesterfire.gov.uk/community/community-safety-vehicles-and-resources/>

## What does it cost?

FREE

When booking vehicles, GMFRS will need to confirm:

- If it is available
- Your event meets our criteria and if we have sufficient staff to operate the vehicle on the day you need it.

All vehicles have particular requirements, which will be covered at the time of booking.



# GMFRS Training & Safety Centre



## Safety Centre - The Visit That Could Save Your Life

The new Greater Manchester Fire and Rescue Service Training and Safety Centre, located in Bury, offers a free interactive learning opportunity to all schools and communities.

It provides a curriculum enhancing, immersive and interactive learning environment that supports the work of schools and emergency services, but also shows visitors how to protect themselves against fire and other dangers and what to do in an emergency.

'The visit that could save your life' will introduce visitors to the work of Greater Manchester Fire and Rescue Service and allow you to experience our impressive immersive theatre, which will provoke the senses with the smell of smoke, the heat of a fire and the sound of the sirens to put the visitor at the heart of the action.

In our Emergency Control Room you can listen to 999 calls. In Fire Street – a realistic community street – visitors will be enlisted to investigate a simulated road traffic collision scene before going in to the full size firehouse to spot potential risks and test if they would be able to escape the fire. As part of our Survival Academy everyone also gets to learn to save a life with some basic CPR training.

When training is taking place, visitors will also be able to gain an insight in to the work GMFRS do at incidents, as they watch live operational training from the viewing gallery and during guided tours of the site.

## Who is it for?

The GMFRS Training and Safety Centre is open to fire and rescue personnel for training, as well as members of the general public, school and community groups.

Our initial safety learning programme will be most suitable for KS2 School Group, (ages 7 to 11) and it will be quickly developed to offer something for all ages.

The facilities at the site offer endless possibilities for other activities, training and partnership work.

## How can I access it?

Email: [safetycentre@manchesterfire.gov.uk](mailto:safetycentre@manchesterfire.gov.uk)

Tel: 0161 603 4620

Website: <http://safetycentre.manchesterfire.gov.uk/>

## What does it cost?

Education group visits are free.

Please enquire for all other activities or use of the facilities.

# Recruitment



Greater Manchester Fire and Rescue Service is one of the largest fire and rescue services in the country and has:

- 41 fire stations
- Headquarters
- Training and Development Centre
- Technical Services Centre
- Training and Safety Centre

There are a wide variety of roles within the service ranging from operational staff (Firefighters) and specialists such as Fire Investigation, to Community or Business Safety Adviser. You could also work for us as an IT specialist, mechanic, joiner, accountant or Communication and Engagement Team member.

## Who is it for?

Greater Manchester Fire and Rescue Service aims to be an employer of choice and is looking to attract a diverse range of applicants from different backgrounds with the right skills and attributes.

## How can I access it?

To register your interest in working with us, from volunteering in our communities to working as a firefighter in our emergency response teams, contact our recruitment team at [jobs@manchesterfire.gov.uk](mailto:jobs@manchesterfire.gov.uk) or visit [www.manchesterfire.gov.uk](http://www.manchesterfire.gov.uk) to see current vacancies.

## What does it cost?

FREE

# Contact Centre



The Greater Manchester Fire and Rescue Service Contact Centre is a vital part of the organisation, they handle all non-emergency calls and:

- Facilitate the Safe and Well booking process
- Schedule appointments with operational firefighters and community safety advisors
- Reschedule cancelled (due to fire call or by occupier) appointments
- Defective alarm enquiries
- Target letters
- Firework amnesty collection request
- Book community rooms and vehicles

## Who is it for?

All residents of Greater Manchester.

## How can I access it?

0800 555 815 freephone number.

Email: [contact@manchesterfire.gov.uk](mailto:contact@manchesterfire.gov.uk)

Secure email: [contact.centre@manchesterfire.cjsm.net](mailto:contact.centre@manchesterfire.cjsm.net)

Through the GMFRS website.

Postal referrals - You can also write to us at:  
Greater Manchester Fire and Rescue Service  
146 Bolton Road, Swinton, Manchester, M27 8US

Referrals forwarded from stations.

High priority HSC requests from victim support or Greater Manchester Police.

Email: [contact@manchesterfire.gov.uk](mailto:contact@manchesterfire.gov.uk)

Secure email: [contact.centre@manchesterfire.cjsm.net](mailto:contact.centre@manchesterfire.cjsm.net)

## What does it cost?

FREE

# Appendix



If you would like more information about a particular service offer, or would like to work with GMFRS to deliver an intervention please email [P&Padmin@manchesterfire.gov.uk](mailto:P&Padmin@manchesterfire.gov.uk)

**For more information visit**

[www.manchesterfire.gov.uk](http://www.manchesterfire.gov.uk)

Twitter: @Manchesterfire

Facebook: @Manchesterfire





GREATER MANCHESTER  
FIRE AND RESCUE SERVICE

For more information visit

**[www.manchesterfire.gov.uk](http://www.manchesterfire.gov.uk)**

**Twitter: @Manchesterfire**

**Facebook: Manchesterfire**